

## Anti-TRMT2A/HTF9C antibody (1-100) [S4MR] (STJ11102674)

### GENERAL INFORMATION

Product Type	Primary antibodies
Applications	WB/ELISA
Host / Source	Rabbit
Reactivity	Human

### PRODUCT PROPERTIES

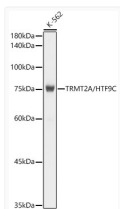
Clonality	Monoclonal
Concentration	Lot specific
Conjugation	Unconjugated
Purification	Affinity purification
Dilution Range	WB:1:500-1:1000 ELISA:Recommended starting concentration is 1 µg/mL. Please optimize the concentration based on your specific assay requirements.
Formulation	PBS with 0.02% Sodium Azide, 0.05% BSA, 50% Glycerol, pH 7.3.
Isotype	IgG
Molecular Weight	Protein Mw: 69kDa Observed Mw: 75kDa
Storage Instruction	Store at -20°C for up to 1 year from the date of receipt, and avoid repeat freeze-thaw cycles.

### TARGET INFORMATION

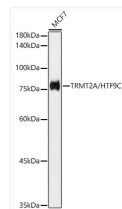
Gene ID	<a href="#">27037</a>
Gene Symbol	<a href="#">TRMT2A</a>
UniProt ID	<a href="#">TRM2A_HUMAN</a>
Immunogen Region	1-100
Immunogen Sequence	MSENLNDNEGPKPMESCGQES SSALSCTVSVPPAAPAALE EVEKEGAGAATGPGPQPLY SYIRDDLFTSEIFKLELQNV PRHASFSDVRRFLGRFGLQP
Specificity	A synthetic peptide corresponding to a sequence within amino acids 1-100 of human TRMT2A/HTF9C (Q8IZ69).

### ADDITIONAL INFORMATION

Note **STRICTLY FOR FURTHER SCIENTIFIC RESEARCH USE ONLY (RUO). MUST NOT TO BE USED IN DIAGNOSTIC OR THERAPEUTIC APPLICATIONS.**



Western blot analysis of K-562, using TRMT2A/HTF9C rabbit monoclonal antibody (STJ11102674) at 1:1000 dilution. Secondary antibody: HRP Goat Anti-rabbit IgG (H+L) (STJS000856) at 1:10000 dilution. Lysates/proteins: 25µg per lane. Blocking buffer: 3% non-fat dry milk in TBST. Detection: ECL Basic Kit. Exposure time: 1s.



Western blot analysis of MCF7, using TRMT2A/HTF9C rabbit monoclonal antibody (STJ11102674) at 1:1000 dilution. Secondary antibody: HRP Goat Anti-rabbit IgG (H+L) (STJS000856) at 1:10000 dilution. Lysates/proteins: 25µg per lane. Blocking buffer: 3% non-fat dry milk in TBST. Detection: ECL Basic Kit. Exposure time: 10s.