

## Anti-Phospho-PRKAA1/PRKAA2-T183/T172 antibody (STJ11102659)

### GENERAL INFORMATION

|               |                    |
|---------------|--------------------|
| Product Type  | Primary antibodies |
| Applications  | WB/ELISA           |
| Host / Source | Rabbit             |
| Reactivity    | Human/Mouse/Rat    |

### PRODUCT PROPERTIES

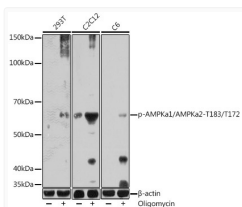
|                     |  |
|---------------------|--|
| Clonality           | Polyclonal   |
| Concentration       | Lot specific   |
| Conjugation         | Unconjugated   |
| Purification        | Affinity purification  |
| Dilution Range      | WB:1:500-1:2000<br>ELISA:Recommended starting concentration is 1 µg/mL. Please optimize the concentration based on your specific assay requirements. |
| Formulation         | PBS with 0.01% Thimerosal, 50% Glycerol, pH 7.3.   |
| Isotype             | IgG  |
| Molecular Weight    | Protein Mw: 64kDa/65kDa/62kDa<br>Observed Mw: 62kDa  |
| Storage Instruction | Store at -20°C for up to 1 year from the date of receipt, and avoid repeat freeze-thaw cycles.   |

### TARGET INFORMATION

|                    |  |
|--------------------|--|
| Gene ID            | <a href="#">5563</a><br><a href="#">5562</a>   |
| Gene Symbol        | <a href="#">PRKAA2</a><br><a href="#">PRKAA1</a>   |
| UniProt ID         | <a href="#">AAPK2_HUMAN</a><br><a href="#">AAPK1_HUMAN</a>                                 |
| Immunogen Sequence | LRTSC  |
| Specificity        | A synthetic phosphorylated peptide around T183 of human AMPKa1/AMPKa2PRKAA1 (NP_006242.5). |

### ADDITIONAL INFORMATION

Note STRICTLY FOR FURTHER SCIENTIFIC RESEARCH USE ONLY (RUO). MUST NOT TO BE USED IN DIAGNOSTIC OR THERAPEUTIC APPLICATIONS.



Western blot analysis of various lysates using Phospho-AMPKa1/AMPKa2-T183/T172 Rabbit pAb (STJ11102659) at 1:1000 dilution. 293T cells were treated by oligomycin (0.5 µM) at 37 °C for 30 minutes. C2C12 cells were treated by oligomycin (0.5 µM) at 37 °C for 30 minutes. C6 cells were treated by oligomycin (0.5 µM) at 37 °C for 30 minutes after serum-starvation overnight.  
 Secondary antibody: HRP-conjugated Goat anti-Rabbit IgG (H+L) (STJS000856) at 1:10000 dilution.  
 Lysates/proteins: 25 µg per lane.  
 Blocking buffer: 3% BSA.  
 Detection: ECL Enhanced Kit  
 Exposure time: 60s.