

## Anti-Phospho-SMC1A-S957 antibody [S9MR] (STJ11102639)

### GENERAL INFORMATION

Product Type	Primary antibodies
Applications	WB/IHC-P/ELISA
Host / Source	Rabbit
Reactivity	Human/Mouse/Rat

### PRODUCT PROPERTIES

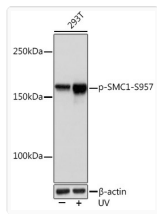
Clonality	Monoclonal
Concentration	Lot specific
Conjugation	Unconjugated
Purification	Affinity purification
Dilution Range	WB:1:500-1:2000 IHC-P:1:50-1:200 ELISA:Recommended starting concentration is 1 µg/mL. Please optimize the concentration based on your specific assay requirements.
Formulation	PBS with 0.02% Sodium Azide, 0.05% BSA, 50% Glycerol, pH 7.3.
Isotype	IgG
Molecular Weight	Protein Mw: 143kDa Observed Mw: 160kDa
Storage Instruction	Store at -20°C for up to 1 year from the date of receipt, and avoid repeat freeze-thaw cycles.

### TARGET INFORMATION

Gene ID	<a href="#">8243</a>
Gene Symbol	<a href="#">SMC1A</a>
UniProt ID	<a href="#">SMC1A_HUMAN</a>
Immunogen Sequence	GSSQG
Specificity	A synthetic phosphorylated peptide around S957 of human SMC1 (Q14683).

### ADDITIONAL INFORMATION

Note	STRICTLY FOR FURTHER SCIENTIFIC RESEARCH USE ONLY (RUO). MUST NOT TO BE USED IN DIAGNOSTIC OR THERAPEUTIC APPLICATIONS.
------	---



Western blot analysis of lysates from 293T cells, using Phospho-SMC1-S957 Rabbit mAb (STJ11102639) at 1:1000 dilution. 293T cells were treated by UV at room temperature for 15-30 minutes.

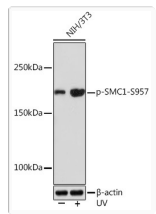
Secondary antibody: HRP-conjugated Goat anti-Rabbit IgG (H+L) (STJS000856) at 1:10000 dilution.

Lysates/proteins: 25 Mu g per lane.

Blocking buffer: 3% BSA.

Detection: ECL Basic Kit

Exposure time: 1s.



Western blot analysis of lysates from NIH/3T3 cells, using Phospho-SMC1-S957 Rabbit mAb (STJ11102639) at 1:1000 dilution. NIH/3T3 cells were treated by UV at room temperature for 15-30 minutes.

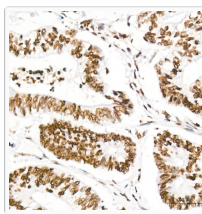
Secondary antibody: HRP-conjugated Goat anti-Rabbit IgG (H+L) (STJS000856) at 1:10000 dilution.

Lysates/proteins: 25 Mu g per lane.

Blocking buffer: 3% BSA.

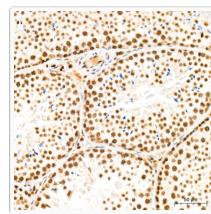
Detection: ECL Enhanced Kit

Exposure time: 3min.



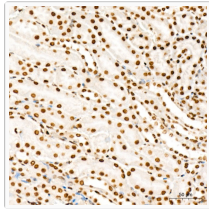
Immunohistochemistry analysis of paraffin-embedded Human colon carcinoma tissue using Phospho-SMC1-S957 Rabbit mAb (STJ11102639) at a dilution of 1:200 (40x lens).

High pressure antigen retrieval was performed with 0.01 M citrate buffer (pH 6.0) prior to immunohistochemistry staining.

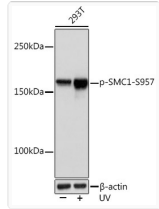


Immunohistochemistry analysis of paraffin-embedded Mouse testis tissue using Phospho-SMC1-S957 Rabbit mAb (STJ11102639) at a dilution of 1:200 (40x lens).

High pressure antigen retrieval was performed with 0.01 M citrate buffer (pH 6.0) prior to immunohistochemistry staining.



Immunohistochemistry analysis of paraffin-embedded Mouse kidney tissue using Phospho-SMC1-S957 Rabbit mAb (STJ11102639) at a dilution of 1:200 (40x lens). High pressure antigen retrieval was performed with 0.01 M citrate buffer (pH 6.0) prior to immunohistochemistry staining.



Western blot analysis of lysates from 293T cells, using Phospho-SMC1-S957 Rabbit mAb (STJ11102639) at 1:1000 dilution. 293T cells were treated by UV at room temperature for 15-30 minutes.

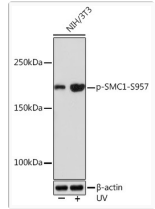
Secondary antibody: HRP-conjugated Goat anti-Rabbit IgG (H+L) (STJS000856) at 1:10000 dilution.

Lysates/proteins: 25 Mu g per lane.

Blocking buffer: 3% BSA.

Detection: ECL Basic Kit

Exposure time: 1s.



Western blot analysis of lysates from NIH/3T3 cells, using Phospho-SMC1-S957 Rabbit mAb (STJ11102639) at 1:1000 dilution. NIH/3T3 cells were treated by UV at room temperature for 15-30 minutes.

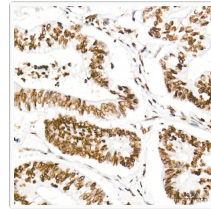
Secondary antibody: HRP-conjugated Goat anti-Rabbit IgG (H+L) (STJS000856) at 1:10000 dilution.

Lysates/proteins: 25 Mu g per lane.

Blocking buffer: 3% BSA.

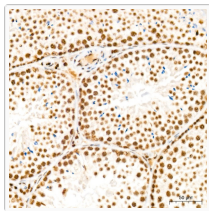
Detection: ECL Enhanced Kit

Exposure time: 3min.

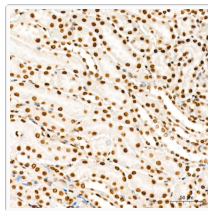


Immunohistochemistry analysis of paraffin-embedded Human colon carcinoma tissue using Phospho-SMC1-S957 Rabbit mAb (STJ11102639) at a dilution of 1:200 (40x lens).

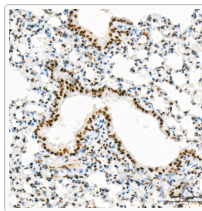
High pressure antigen retrieval was performed with 0.01 M citrate buffer (pH 6.0) prior to immunohistochemistry staining.



Immunohistochemistry analysis of paraffin-embedded Mouse testis tissue using Phospho-SMC1-S957 Rabbit mAb (STJ11102639) at a dilution of 1:200 (40x lens). High pressure antigen retrieval was performed with 0.01 M citrate buffer (pH 6.0) prior to immunohistochemistry staining.



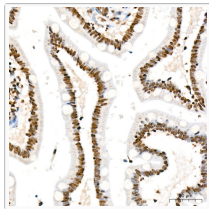
Immunohistochemistry analysis of paraffin-embedded Mouse kidney tissue using Phospho-SMC1-S957 Rabbit mAb (STJ11102639) at a dilution of 1:200 (40x lens). High pressure antigen retrieval was performed with 0.01 M citrate buffer (pH 6.0) prior to immunohistochemistry staining.



Immunohistochemistry analysis of paraffin-embedded Rat lung tissue using Phospho-SMC1-S957 Rabbit mAb (STJ11102639) at a dilution of 1:200 (40x lens). High pressure antigen retrieval was performed with 0.01 M citrate buffer (pH 6.0) prior to immunohistochemistry staining.



Immunohistochemistry analysis of paraffin-embedded Human esophagus tissue using Phospho-SMC1-S957 Rabbit mAb (STJ11102639) at a dilution of 1:200 (40x lens). High pressure antigen retrieval was performed with 0.01 M citrate buffer (pH 6.0) prior to immunohistochemistry staining.



Immunohistochemistry analysis of paraffin-embedded Human small intestine tissue using Phospho-SMC1-S957 Rabbit mAb (STJ11102639) at a dilution of 1:200 (40x lens).

High pressure antigen retrieval was performed with 0.01 M citrate buffer (pH 6.0) prior to immunohistochemistry staining.