

Anti-Phospho-CDC37-S13 antibody [S7MR] (STJ11102637)

GENERAL INFORMATION

Product Type	Primary antibodies
Applications	WB/ELISA
Host / Source	Rabbit
Reactivity	Human/Mouse/Rat

PRODUCT PROPERTIES

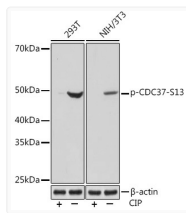
Clonality	Monoclonal
Concentration	Lot specific
Conjugation	Unconjugated
Purification	Affinity purification
Dilution Range	WB:1:500-1:2000 ELISA:Recommended starting concentration is 1 µg/mL. Please optimize the concentration based on your specific assay requirements.
Formulation	PBS with 0.02% Sodium Azide, 0.05% BSA, 50% Glycerol, pH 7.3.
Isotype	IgG
Molecular Weight	Protein Mw: 44kDa Observed Mw: 50kDa
Storage Instruction	Store at -20°C for up to 1 year from the date of receipt, and avoid repeat freeze-thaw cycles.

TARGET INFORMATION

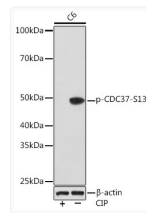
Gene ID	11140
Gene Symbol	CDC37
UniProt ID	CDC37_HUMAN
Immunogen Sequence	EVSDD
Specificity	A synthetic phosphorylated peptide around S13 of human CDC37 (Q16543).

ADDITIONAL INFORMATION

Note **STRICTLY FOR FURTHER SCIENTIFIC RESEARCH USE ONLY (RUO). MUST NOT TO BE USED IN DIAGNOSTIC OR THERAPEUTIC APPLICATIONS.**



Western blot analysis of various lysates using Phospho-CDC37-S13 Rabbit mAb (STJ11102637) at 1:1000 dilution. Both 293T cells and NIH/3T3 cells were treated by CIP (20µL/400ul) at 37 °C for 1 hour. Secondary antibody: HRP-conjugated Goat anti-Rabbit IgG (H+L) (STJS000856) at 1:10000 dilution. Lysates/proteins: 25 µg per lane. Blocking buffer: 3% BSA. Detection: ECL Basic Kit Exposure time: 10s.



Western blot analysis of lysates from C6 cells, using Phospho-CDC37-S13 Rabbit mAb (STJ11102637) at 1:1000 dilution. C6 cells were treated by CIP (20µL/400ul) at 37 °C for 1 hour. Secondary antibody: HRP-conjugated Goat anti-Rabbit IgG (H+L) (STJS000856) at 1:10000 dilution. Lysates/proteins: 25 µg per lane. Blocking buffer: 3% BSA. Detection: ECL Basic Kit Exposure time: 3min.