

Anti-Phospho-LYN-Y396 antibody [S0MR] (STJ11102620)

GENERAL INFORMATION

Product Type	Primary antibodies
Applications	WB/ELISA
Host / Source	Rabbit
Reactivity	Human/Mouse/Rat

PRODUCT PROPERTIES

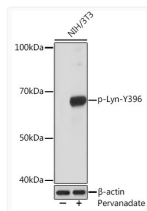
Clonality	Monoclonal
Concentration	Lot specific
Conjugation	Unconjugated
Purification	Affinity purification
Dilution Range	WB:1:500-1:2000 ELISA:Recommended starting concentration is 1 Mu g/mL. Please optimize the concentration based on your specific assay requirements.
Formulation	PBS with 0.02% Sodium Azide, 0.05% BSA, 50% Glycerol, pH 7.3.
Isotype	IgG
Molecular Weight	Protein Mw: 56kDa/59kDa Observed Mw: 56kDa
Storage Instruction	Store at -20°C for up to 1 year from the date of receipt, and avoid repeat freeze-thaw cycles.

TARGET INFORMATION

Gene ID	4067
Gene Symbol	LYN
UniProt ID	LYN_HUMAN
Immunogen Sequence	DNEYT
Specificity	A synthetic phosphorylated peptide around Y396 of human Lyn (P07948).

ADDITIONAL INFORMATION

Note **STRICTLY FOR FURTHER SCIENTIFIC RESEARCH USE ONLY (RUO). MUST NOT TO BE USED IN DIAGNOSTIC OR THERAPEUTIC APPLICATIONS.**



Western blot analysis of lysates from NIH/3T3 cells, using Phospho-Lyn-Y396 Rabbit mAb (STJ11102620) at 1:1000 dilution. NIH/3T3 cells were treated by pervanadate (1 mM) at 37 °C for 30 minutes after serum-starvation overnight. Secondary antibody: HRP-conjugated Goat anti-Rabbit IgG (H+L) (STJS000856) at 1:10000 dilution.
 Lysates/proteins: 25 Mu g per lane.
 Blocking buffer: 3% BSA.
 Detection: ECL Basic Kit
 Exposure time: 30s.