

Anti-Phospho-CHEK1-S296 antibody [S8MR] (STJ11102618)

GENERAL INFORMATION

Product Type	Primary antibodies
Applications	WB/ELISA
Host / Source	Rabbit
Reactivity	Human

PRODUCT PROPERTIES

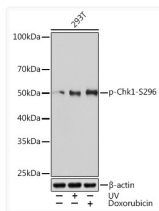
Clonality	Monoclonal
Concentration	Lot specific
Conjugation	Unconjugated
Purification	Affinity purification
Dilution Range	WB:1:500-1:1000 ELISA:Recommended starting concentration is 1 µg/mL. Please optimize the concentration based on your specific assay requirements.
Formulation	PBS with 0.02% Sodium Azide, 0.05% BSA, 50% Glycerol, pH 7.3.
Isotype	IgG
Molecular Weight	Protein Mw: 54kDa Observed Mw: 50kDa
Storage Instruction	Store at -20°C for up to 1 year from the date of receipt, and avoid repeat freeze-thaw cycles.

TARGET INFORMATION

Gene ID	1111
Gene Symbol	CHEK1
UniProt ID	CHK1_HUMAN
Immunogen Sequence	IQSNL
Specificity	A synthetic phosphorylated peptide around S296 of human Chk1 (O14757).

ADDITIONAL INFORMATION

Note STRICTLY FOR FURTHER SCIENTIFIC RESEARCH USE ONLY (RUO). MUST NOT TO BE USED IN DIAGNOSTIC OR THERAPEUTIC APPLICATIONS.



Western blot analysis of lysates from 293T cells, using Phospho-Chk1-S296 Rabbit mAb (STJ11102618) at 1:1000 dilution. 293T cells were treated by UV at room temperature for 15-30 minutes and Doxorubicin (0.5 µM) at 37 °C for 24 hours.

Secondary antibody: HRP-conjugated Goat anti-Rabbit IgG (H+L) (STJS000856) at 1:10000 dilution.

Lysates/proteins: 25 µg per lane.
 Blocking buffer: 3% BSA.
 Detection: ECL Basic Kit
 Exposure time: 3min.