

Anti-Phospho-HSPB1-S82 antibody [S1MR] (STJ11102611)

GENERAL INFORMATION

Product Type	Primary antibodies
Applications	WB/ELISA
Host / Source	Rabbit
Reactivity	Human/Rat

PRODUCT PROPERTIES

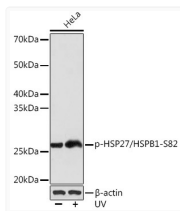
Clonality	Monoclonal
Concentration	Lot specific
Conjugation	Unconjugated
Purification	Affinity purification
Dilution Range	WB:1:500-1:2000 ELISA:Recommended starting concentration is 1 Mu g/mL. Please optimize the concentration based on your specific assay requirements.
Formulation	PBS with 0.02% Sodium Azide, 0.05% BSA, 50% Glycerol, pH 7.3.
Isotype	IgG
Molecular Weight	Protein Mw: 23kDa Observed Mw: 27kDa
Storage Instruction	Store at -20°C for up to 1 year from the date of receipt, and avoid repeat freeze-thaw cycles.

TARGET INFORMATION

Gene ID	3315
Gene Symbol	HSPB1
UniProt ID	HSPB1_HUMAN
Immunogen Sequence	QLSSG
Specificity	A synthetic phosphorylated peptide around S82 of human HSP27/HSPB1HSPB1 (P04792).

ADDITIONAL INFORMATION

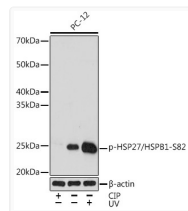
Note **STRICTLY FOR FURTHER SCIENTIFIC RESEARCH USE ONLY (RUO). MUST NOT TO BE USED IN DIAGNOSTIC OR THERAPEUTIC APPLICATIONS.**



Western blot analysis of lysates from HeLa cells, using Phospho-HSP27/HSPB1-S82 Rabbit mAb (STJ11102611) at 1:1000 dilution. HeLa cells were treated by UV at room temperature for 15-30 minutes.

Secondary antibody: HRP-conjugated Goat anti-Rabbit IgG (H+L) (STJS000856) at 1:10000 dilution.

Lysates/proteins: 25 Mu g per lane.
 Blocking buffer: 3% BSA.
 Detection: ECL Basic Kit
 Exposure time: 3s.



Western blot analysis of lysates from PC-12 cells, using Phospho-HSP27/HSPB1-S82 Rabbit mAb (STJ11102611) at 1:1000 dilution. PC-12 cells were treated by CIP (20uL/400ul) at 37 °C for 1 hour or treated by UV at room temperature for 15-30 minutes.

Secondary antibody: HRP-conjugated Goat anti-Rabbit IgG (H+L) (STJS000856) at 1:10000 dilution.

Lysates/proteins: 25 Mu g per lane.
 Blocking buffer: 3% BSA.
 Detection: ECL Basic Kit
 Exposure time: 90s.