

Anti-Phospho-CDC42/RAC1-S71 antibody [S1MR] (STJ11102601)

GENERAL INFORMATION

Product Type	Primary antibodies
Applications	WB/ELISA
Host / Source	Rabbit
Reactivity	Human

PRODUCT PROPERTIES

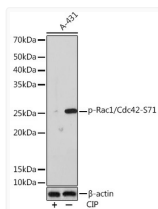
Clonality	Monoclonal
Concentration	Lot specific
Conjugation	Unconjugated
Purification	Affinity purification
Dilution Range	WB:1:500-1:2000 ELISA:Recommended starting concentration is 1 µg/mL. Please optimize the concentration based on your specific assay requirements.
Formulation	PBS with 0.02% Sodium Azide, 0.05% BSA, 50% Glycerol, pH 7.3.
Isotype	IgG
Molecular Weight	Protein Mw: 24kDa Observed Mw: 24kDa
Storage Instruction	Store at -20°C for up to 1 year from the date of receipt, and avoid repeat freeze-thaw cycles.

TARGET INFORMATION

Gene ID	5879 998
Gene Symbol	RAC1 CDC42
UniProt ID	RAC1_HUMAN CDC42_HUMAN
Immunogen Sequence	PLSYP
Specificity	A synthetic phosphorylated peptide around S71 of human Rac1/Cdc42/CDC42 (P60953).

ADDITIONAL INFORMATION

Note STRICTLY FOR FURTHER SCIENTIFIC RESEARCH USE ONLY (RUO). MUST NOT TO BE USED IN DIAGNOSTIC OR THERAPEUTIC APPLICATIONS.



Western blot analysis of lysates from A-431 cells, using Phospho-Rac1/Cdc42-S71 Rabbit mAb (STJ11102601) at 1:1000 dilution. A-431 cells were treated by CIP (20µL/400ul) at 37 °C for 1 hour.

Secondary antibody: HRP-conjugated Goat anti-Rabbit IgG (H+L) (STJS000856) at 1:10000 dilution.

Lysates/proteins: 25 µg per lane.

Blocking buffer: 3% BSA.

Detection: ECL Enhanced Kit

Exposure time: 3min.