

Anti-Phospho-JUN-T91 antibody [S2MR] (STJ11102592)

GENERAL INFORMATION

Product Type	Primary antibodies
Applications	WB/IHC-P/ELISA
Host / Source	Rabbit
Reactivity	Human/Mouse/Rat

PRODUCT PROPERTIES

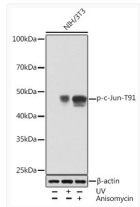
Clonality	Monoclonal
Concentration	Lot specific
Conjugation	Unconjugated
Purification	Affinity purification
Dilution Range	WB:1:500-1:2000 IHC-P:1:50-1:200 ELISA:Recommended starting concentration is 1 Mu g/mL. Please optimize the concentration based on your specific assay requirements.
Formulation	PBS with 0.02% Sodium Azide, 0.05% BSA, 50% Glycerol, pH 7.3.
Isotype	IgG
Molecular Weight	Protein Mw: 36kDa Observed Mw: 43kDa
Storage Instruction	Store at -20°C for up to 1 year from the date of receipt, and avoid repeat freeze-thaw cycles.

TARGET INFORMATION

Gene ID	3725
Gene Symbol	JUN
UniProt ID	JUN_HUMAN
Immunogen Sequence	TTTPT
Specificity	A synthetic phosphorylated peptide around T91 of human c-Jun (P05412).

ADDITIONAL INFORMATION

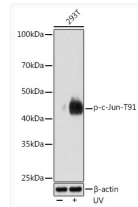
Note **STRICTLY FOR FURTHER SCIENTIFIC RESEARCH USE ONLY (RUO). MUST NOT TO BE USED IN DIAGNOSTIC OR THERAPEUTIC APPLICATIONS.**



Western blot analysis of lysates from NIH/3T3 cells, using Phospho-c-Jun-T91 Rabbit mAb (STJ11102592) at 1:1000 dilution. NIH/3T3 cells were treated by UV at room temperature for 15-30 minutes or treated by Anisomycin (25 Mu g/mL) at 37 °C for 30 minutes.

Secondary antibody: HRP-conjugated Goat anti-Rabbit IgG (H+L) (STJS000856) at 1:10000 dilution.

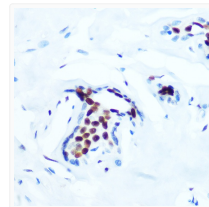
Lysates/proteins: 25 Mu g per lane.
Blocking buffer: 3% BSA.
Detection: ECL Basic Kit
Exposure time: 30s.



Western blot analysis of lysates from 293T cells, using Phospho-c-Jun-T91 Rabbit mAb (STJ11102592) at 1:1000 dilution. 293T cells were treated by UV at room temperature for 15-30 minutes.

Secondary antibody: HRP-conjugated Goat anti-Rabbit IgG (H+L) (STJS000856) at 1:10000 dilution.

Lysates/proteins: 25 Mu g per lane.
Blocking buffer: 3% BSA.
Detection: ECL Enhanced Kit
Exposure time: 3min.



Immunohistochemistry analysis of paraffin-embedded Human breast using Phospho-c-Jun-T91 Rabbit mAb (STJ11102592) at dilution of 1:100 (40x lens). Microwave antigen retrieval performed with 0.01M Tris/EDTA Buffer (pH 9.0) prior to immunohistochemistry staining.