

Anti-Phospho-CDK1/CDK2-T14 antibody [S0MR] (STJ11102590)

GENERAL INFORMATION

Product Type	Primary antibodies
Applications	WB/ELISA
Host / Source	Rabbit
Reactivity	Human/Mouse/Rat

PRODUCT PROPERTIES

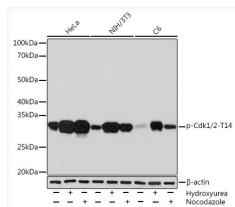
Clonality	Monoclonal
Concentration	Lot specific
Conjugation	Unconjugated
Purification	Affinity purification
Dilution Range	WB:1:500-1:1000 ELISA:Recommended starting concentration is 1 µg/mL. Please optimize the concentration based on your specific assay requirements.
Formulation	PBS with 0.02% Sodium Azide, 0.05% BSA, 50% Glycerol, pH 7.3.
Isotype	IgG
Molecular Weight	Protein Mw: 34kDa Observed Mw: 34kDa
Storage Instruction	Store at -20°C for up to 1 year from the date of receipt, and avoid repeat freeze-thaw cycles.

TARGET INFORMATION

Gene ID	983 1017
Gene Symbol	CDK1 CDK2
UniProt ID	CDK1_HUMAN CDK2_HUMAN
Immunogen Sequence	EGTYG
Specificity	A synthetic phosphorylated peptide around T14 of human Cdk1/2CDK1 (P06493).

ADDITIONAL INFORMATION

Note STRICTLY FOR FURTHER SCIENTIFIC RESEARCH USE ONLY (RUO). MUST NOT TO BE USED IN DIAGNOSTIC OR THERAPEUTIC APPLICATIONS.



Western blot analysis of various lysates using Phospho-Cdk1/2-T14 Rabbit mAb (STJ11102590) at 1:1000 dilution. HeLa cells and NIH/3T3 cells and C6 cells were treated by Hydroxyurea (4 mM) at 37 °C for 20 hours or treated by Nocodazole (100 ng/mL) at 37 °C for 24 hours.

Secondary antibody: HRP-conjugated Goat anti-Rabbit IgG (H+L) (STJS000856) at 1:10000 dilution.

Lysates/proteins: 25 µg per lane.

Blocking buffer: 3% BSA.

Detection: ECL Basic Kit

Exposure time: 30s.