

Anti-Phospho-STAT3-S727 antibody [S5MR] (STJ11102565)

GENERAL INFORMATION

Product Type	Primary antibodies
Applications	WB/IHC-P/ELISA
Host / Source	Rabbit
Reactivity	Human/Mouse/Rat

PRODUCT PROPERTIES

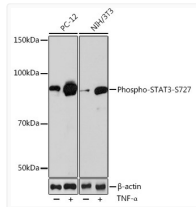
Clonality	Monoclonal
Concentration	Lot specific
Conjugation	Unconjugated
Purification	Affinity purification
Dilution Range	WB:1:500-1:2000 IHC-P:1:50-1:200 ELISA:Recommended starting concentration is 1 Mu g/mL. Please optimize the concentration based on your specific assay requirements.
Formulation	PBS with 0.02% Sodium Azide, 0.05% BSA, 50% Glycerol, pH 7.3.
Isotype	IgG
Molecular Weight	Protein Mw: 88kDa Observed Mw: 88kDa
Storage Instruction	Store at -20°C for up to 1 year from the date of receipt, and avoid repeat freeze-thaw cycles.

TARGET INFORMATION

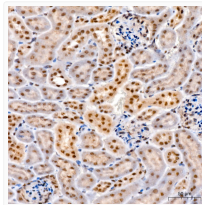
Gene ID	6774
Gene Symbol	STAT3
UniProt ID	STAT3_HUMAN
Immunogen Sequence	PMSPR
Specificity	A synthetic phosphorylated peptide around S727 of human Phospho-Phospho-STAT3-S727 (S727) (P40763).

ADDITIONAL INFORMATION

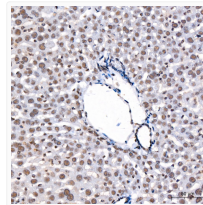
Note STRICTLY FOR FURTHER SCIENTIFIC RESEARCH USE ONLY (RUO). MUST NOT TO BE USED IN DIAGNOSTIC OR THERAPEUTIC APPLICATIONS.



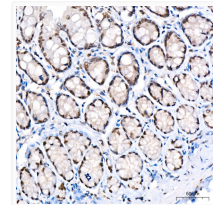
Western blot analysis of various lysates using Phospho-STAT3-S727 Rabbit mAb (STJ11102565) at 1:1000 dilution. NIH/3T3 and PC-12 cells were treated by TNF-Alpha (20 ng/mL) at 37 °C for 30 minutes. Secondary antibody: HRP-conjugated Goat anti-Rabbit IgG (H+L) (STJS000856) at 1:10000 dilution. Lysates/proteins: 25 Mu g per lane. Blocking buffer: 3% nonfat dry milk in TBST. Detection: ECL Basic Kit Exposure time: 120s.



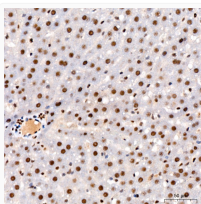
Immunohistochemistry analysis of paraffin-embedded Mouse kidney using Phospho-STAT3-S727 Rabbit mAb (STJ11102565) at dilution of 1:200 (40x lens). High pressure antigen retrieval performed with 0. 01M Citrate Bufferr (pH 6. 0) prior to immunohistochemistry staining.



Immunohistochemistry analysis of paraffin-embedded Mouse liver using Phospho-STAT3-S727 Rabbit mAb (STJ11102565) at dilution of 1:200 (40x lens). High pressure antigen retrieval performed with 0. 01M Citrate Bufferr (pH 6. 0) prior to immunohistochemistry staining.



Immunohistochemistry analysis of paraffin-embedded Rat colon using Phospho-STAT3-S727 Rabbit mAb (STJ11102565) at dilution of 1:200 (40x lens). High pressure antigen retrieval performed with 0. 01M Citrate Bufferr (pH 6. 0) prior to immunohistochemistry staining.



Immunohistochemistry analysis of paraffin-embedded Rat liver using Phospho-STAT3-S727 Rabbit mAb (STJ11102565) at dilution of 1:200 (40x lens). High pressure antigen retrieval performed with 0. 01M Citrate Bufferr (pH 6. 0) prior to immunohistochemistry staining.