

Anti-Phospho-Histone H2A-S139 antibody [S1MR] (STJ11102561)

GENERAL INFORMATION

Product Type	Primary antibodies
Applications	WB/IHC-P/IF/ICC/ELISA
Host / Source	Rabbit
Reactivity	Human/Mouse/Rat

PRODUCT PROPERTIES

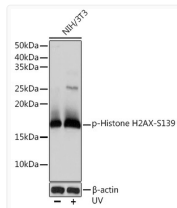
Clonality	Monoclonal
Concentration	Lot specific
Conjugation	Unconjugated
Purification	Affinity purification
Dilution Range	WB:1:500-1:1000 IHC-P:1:500-1:2000 IF/ICC:1:2000-1:8000 ELISA:Recommended starting concentration is 1 µg/mL. Please optimize the concentration based on your specific assay requirements.
Formulation	PBS with 0.09% Sodium Azide, 0.05% BSA, 50% Glycerol, pH7.3.
Isotype	IgG
Molecular Weight	Protein Mw: 15kDa Observed Mw: 17kDa/15kDa
Storage Instruction	Store at -20°C for up to 1 year from the date of receipt, and avoid repeat freeze-thaw cycles.

TARGET INFORMATION

Gene ID	3014
Gene Symbol	H2AX
UniProt ID	H2AX_HUMAN
Immunogen Sequence	TQASQ
Specificity	A synthetic phosphorylated peptide around S139 of human Histone H2A.X (P16104).

ADDITIONAL INFORMATION

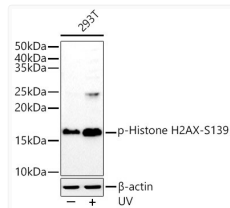
Note **STRICTLY FOR FURTHER SCIENTIFIC RESEARCH USE ONLY (RUO). MUST NOT TO BE USED IN DIAGNOSTIC OR THERAPEUTIC APPLICATIONS.**



Western blot analysis of lysates from NIH/3T3 cells, using Phospho-Histone H2AX-S139 Rabbit mAb (STJ11102561) at 1:1000 dilution. NIH/3T3 cells were treated by UV at room temperature for 15-30 minutes.

Secondary antibody: HRP-conjugated Goat anti-Rabbit IgG (H+L) (STJS000856) at 1:10000 dilution.

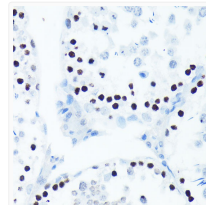
Lysates/proteins: 25 µg per lane.
Blocking buffer: 3% BSA.
Detection: ECL Basic Kit
Exposure time: 1s.



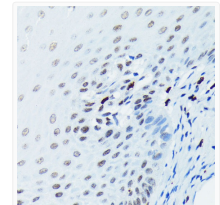
Western blot analysis of lysates from 293T cells, using Phospho-Histone H2AX-S139 Rabbit mAb (STJ11102561) at 1:1000 dilution. 293T cells were treated by UV at room temperature for 15-30 minutes.

Secondary antibody: HRP-conjugated Goat anti-Rabbit IgG (H+L) (STJS000856) at 1:10000 dilution.

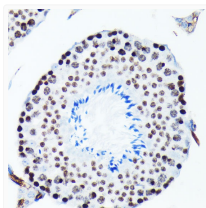
Lysates/proteins: 25 µg per lane.
Blocking buffer: 3% nonfat dry milk in TBST.
Detection: ECL Basic Kit
Exposure time: 30s.



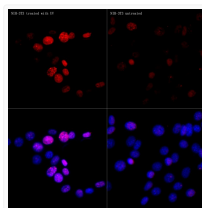
Immunohistochemistry analysis of paraffin-embedded Mouse testis tissue using Phospho-Histone H2AX-S139 Rabbit mAb (STJ11102561) at a dilution of 1:1000 (40x lens). High pressure antigen retrieval performed with 0.01M Citrate Buffer (pH 6.0) prior to immunohistochemistry staining.



Immunohistochemistry analysis of paraffin-embedded Rat spleen tissue using Phospho-Histone H2AX-S139 Rabbit mAb (STJ11102561) at a dilution of 1:1000 (40x lens). High pressure antigen retrieval performed with 0.01M Citrate Buffer (pH 6.0) prior to immunohistochemistry staining.



Confocal imaging of 293T cells (treated with UV) and 293T cells (untreated) using Phospho-Histone H2AX-S139 Rabbit mAb (STJ11102561, dilution 1:5000) followed by a further incubation with Cy3 Goat Anti-Rabbit IgG (H+L) (STJS001166, dilution 1:500) (Red). DAPI was used for nuclear staining (Blue). Objective: 100x.



Confocal imaging of NIH/3T3 cells (treated with UV) and NIH/3T3 cells (untreated) using Phospho-Histone H2AX-S139 Rabbit mAb (STJ11102561, dilution 1:5000) followed by a further incubation with Cy3 Goat Anti-Rabbit IgG (H+L) (STJS001166, dilution 1:500) (Red). DAPI was used for nuclear staining (Blue). Objective: 100x.