

## Anti-CD3D antibody (72-171) [S5MR] (STJ11102545)

### GENERAL INFORMATION

Product Type	Primary antibodies
Applications	WB/IF/ICC/FC/ELISA
Host / Source	Rabbit
Reactivity	Human/Mouse/Rat

### PRODUCT PROPERTIES

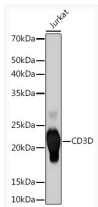
Clonality	Monoclonal
Concentration	Lot specific
Conjugation	Unconjugated
Purification	Affinity purification
Dilution Range	WB:1:500-1:1000 IF/CC:1:200-1:800 FC:1:50-1:200 ELISA:Recommended starting concentration is 1 $\mu$ g/mL. Please optimize the concentration based on your specific assay requirements.
Formulation	PBS with 0.02% Sodium Azide, 0.05% BSA, 50% Glycerol, pH 7.3.
Isotype	IgG
Molecular Weight	Protein Mw: 19kDa Observed Mw: 23kDa
Storage Instruction	Store at -20°C for up to 1 year from the date of receipt, and avoid repeat freeze-thaw cycles.

### TARGET INFORMATION

Gene ID	<a href="#">915</a>
Gene Symbol	<a href="#">CD3D</a>
UniProt ID	<a href="#">CD3D_HUMAN</a>
Immunogen Region	72-171
Immunogen Sequence	RCNGTDIYKDKESTVQVHYR MCQSCVELDPATVAGIIVTD VIATLLLLALGVFCFAGHETG RLSGAADTQALLRNDQVYQP LRDRDDAQYSHLGGNWARNK
Specificity	A synthetic peptide corresponding to a sequence within amino acids 72-171 of human CD3D (P04234).

### ADDITIONAL INFORMATION

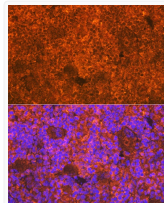
Note STRICTLY FOR FURTHER SCIENTIFIC RESEARCH USE ONLY (RUO). MUST NOT TO BE USED IN DIAGNOSTIC OR THERAPEUTIC APPLICATIONS.



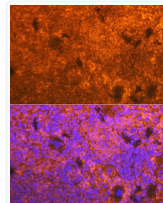
Western blot analysis of lysates from Jurkat cells, using CD3D Rabbit mAb (STJ11102545) at 1:500 dilution.

Secondary antibody: HRP-conjugated Goat anti-Rabbit IgG (H+L) (STJS000856) at 1:10000 dilution.

Lysates/proteins: 25  $\mu$ g per lane.  
Blocking buffer: 3% nonfat dry milk in TBST.  
Detection: ECL Basic Kit  
Exposure time: 60s.



Confocal imaging of paraffin-embedded Human spleen tissue using CD3D Rabbit mAb (STJ11102545, dilution 1:200) followed by a further incubation with Cy3 Goat Anti-Rabbit IgG (H+L) (STJS001166, dilution 1:500) (Red). DAPI was used for nuclear staining (Blue). Objective: 40x. Perform high pressure antigen retrieval with 0.01 M citrate buffer (pH 6.0) prior to IF staining.



Flow cytometry:  $1 \times 10^6$  Raji cells (negative control, left) and Jurkat cells (right) were surface-stained with CD3D Rabbit mAb (STJ11102545, 2.5  $\mu$ g/mL orange line) or ABflo® 488 IgG isotype control (STJ11105763, 2.5  $\mu$ g/mL, blue line). Non-fluorescently stained cells were used as blank control (red line).