

Anti-CDC25B antibody (100-200) [S2MR] (STJ11102542)

GENERAL INFORMATION

Product Type	Primary antibodies
Applications	WB/IHC-P/ELISA
Host / Source	Rabbit
Reactivity	Human

PRODUCT PROPERTIES

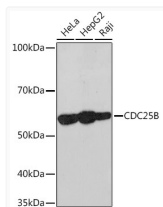
Clonality	Monoclonal
Concentration	Lot specific
Conjugation	Unconjugated
Purification	Affinity purification
Dilution Range	WB:1:500-1:1000 IHC-P:1:50-1:200 ELISA:Recommended starting concentration is 1 Mu g/mL. Please optimize the concentration based on your specific assay requirements.
Formulation	PBS with 0.02% Sodium Azide, 0.05% BSA, 50% Glycerol, pH 7.3.
Isotype	IgG
Molecular Weight	Protein Mw: 65kDa Observed Mw: 60kDa
Storage Instruction	Store at -20°C for up to 1 year from the date of receipt, and avoid repeat freeze-thaw cycles.

TARGET INFORMATION

Gene ID	994
Gene Symbol	CDC25B
UniProt ID	MPIP2_HUMAN
Immunogen Region	100-200
Immunogen Sequence	SSESSSESDAGLCMDSPSPM DPHMAEQTFEQAIQAASRII RNEQFAIRRFQSMPVRLGLH SPVLRNITNSQAPDGRRKSE AGSGAASSSGEDKENDGFVF K
Specificity	A synthetic peptide corresponding to a sequence within amino acids 100-200 of human CDC25B (P30305).

ADDITIONAL INFORMATION

Note STRICTLY FOR FURTHER SCIENTIFIC RESEARCH USE ONLY (RUO). MUST NOT TO BE USED IN DIAGNOSTIC OR THERAPEUTIC APPLICATIONS.

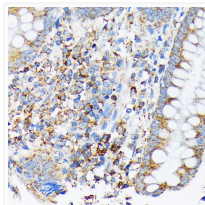


Western blot analysis of various lysates using CDC25B Rabbit mAb (STJ11102542) at 1:1000 dilution.

Secondary antibody: HRP-conjugated Goat anti-Rabbit IgG (H+L) (STJS000856) at 1:10000 dilution.

Lysates/proteins: 25 Mu g per lane.
Blocking buffer: 3% nonfat dry milk in TBST.

Detection: ECL Basic Kit
Exposure time: 10s.



Immunohistochemistry analysis of paraffin-embedded Human appendix using CDC25B Rabbit mAb (STJ11102542) at dilution of 1:100 (40x lens). Microwave antigen retrieval performed with 0.01M Tris/EDTA Buffer (pH 9.0) prior to immunohistochemistry staining.