

## Anti-A2M antibody (1200-1300) [S0MR] (STJ11102540)

### GENERAL INFORMATION

Product Type	Primary antibodies
Applications	WB/IHC-P/IF/ICC/ELISA
Host / Source	Rabbit
Reactivity	Human/Mouse/Rat

### PRODUCT PROPERTIES

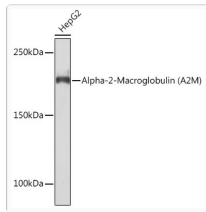
Clonality	Monoclonal
Concentration	Lot specific
Conjugation	Unconjugated
Purification	Affinity purification
Dilution Range	WB:1:500-1:1000 IHC-P:1:200-1:2000 IF/ICC:1:100-1:400 ELISA:Recommended starting concentration is 1 µg/mL. Please optimize the concentration based on your specific assay requirements.
Formulation	PBS with 0.02% Sodium Azide, 0.05% BSA, 50% Glycerol, pH 7.3.
Isotype	IgG
Molecular Weight	Protein Mw: 163kDa Observed Mw: 185kDa
Storage Instruction	Store at -20°C for up to 1 year from the date of receipt, and avoid repeat freeze-thaw cycles.

### TARGET INFORMATION

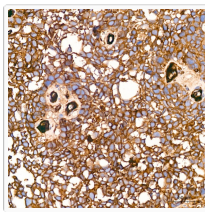
Gene ID	<a href="#">2</a>
Gene Symbol	<a href="#">A2M</a>
UniProt ID	<a href="#">A2MG_HUMAN</a>
Immunogen Region	1200-1300
Immunogen Sequence	QAPSAEVEMTSYVLLAYLTA QPAPTSSEDLTSATNIVKWIT KQNAQQGGFSSTQDVTVALH ALSKYGAATFTRTGKAAQVT IQSSGTFSSKFQVDNNRLL L
Specificity	A synthetic peptide corresponding to a sequence within amino acids 1200-1300 of human Alpha-2-Macroglobulin (A2M) (P01023).

### ADDITIONAL INFORMATION

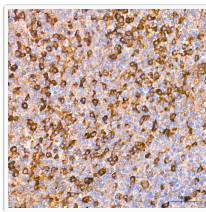
Note	STRICTLY FOR FURTHER SCIENTIFIC RESEARCH USE ONLY (RUO). MUST NOT TO BE USED IN DIAGNOSTIC OR THERAPEUTIC APPLICATIONS.
------	---



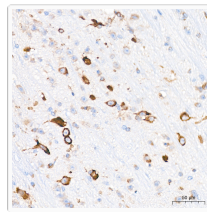
Western blot analysis of lysates from Hep G2 cells, using Alpha-2-Macroglobulin (Alpha-2-Macroglobulin (A2M) ) Rabbit mAb (STJ11102540) at 1:1000 dilution. Secondary antibody: HRP-conjugated Goat anti-Rabbit IgG (H+L) (STJS000856) at 1:10000 dilution. Lysates/proteins: 25 Mu g per lane. Blocking buffer: 3% nonfat dry milk in TBST. Detection: ECL Basic Kit Exposure time: 90s.



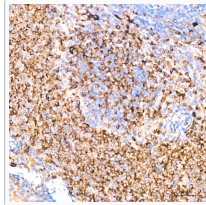
Immunohistochemistry analysis of paraffin-embedded Human cervix cancer tissue using Alpha-2-Macroglobulin (A2M) Rabbit mAb (STJ11102540) at a dilution of 1:200 (40x lens). High pressure antigen retrieval performed with 0.01M Citrate Bufferr (pH 6.0) prior to immunohistochemistry staining.



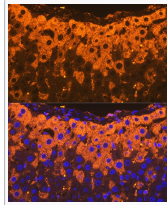
Immunohistochemistry analysis of paraffin-embedded Human tonsil tissue using Alpha-2-Macroglobulin (A2M) Rabbit mAb (STJ11102540) at a dilution of 1:200 (40x lens). High pressure antigen retrieval performed with 0.01M Citrate Bufferr (pH 6.0) prior to immunohistochemistry staining.



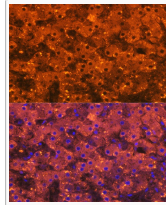
Immunohistochemistry analysis of paraffin-embedded Mouse brain tissue using Alpha-2-Macroglobulin (A2M) Rabbit mAb (STJ11102540) at a dilution of 1:200 (40x lens). High pressure antigen retrieval performed with 0.01M Citrate Bufferr (pH 6.0) prior to immunohistochemistry staining.



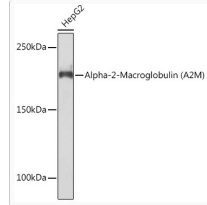
Immunohistochemistry analysis of paraffin-embedded Rat spleen tissue using Alpha-2-Macroglobulin (A2M) Rabbit mAb (STJ11102540) at a dilution of 1:200 (40x lens). High pressure antigen retrieval performed with 0.01M Citrate Bufferr (pH 6.0) prior to immunohistochemistry staining.



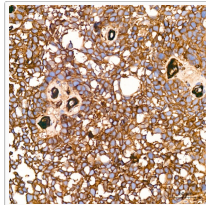
Immunofluorescence analysis of paraffin-embedded rat liver using Alpha-2-Macroglobulin (Alpha-2-Macroglobulin (A2M) ) Rabbit mAb (STJ11102540) at dilution of 1:100 (40x lens). Secondary antibody: Cy3-conjugated Goat anti-Rabbit IgG (H+L) (STJS001166) at 1:500 dilution. Blue: DAPI for nuclear staining.



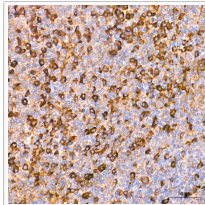
Immunofluorescence analysis of paraffin-embedded human liver using Alpha-2-Macroglobulin (Alpha-2-Macroglobulin (A2M) ) Rabbit mAb (STJ11102540) at dilution of 1:100 (40x lens). Secondary antibody: Cy3-conjugated Goat anti-Rabbit IgG (H+L) (STJS001166) at 1:500 dilution. Blue: DAPI for nuclear staining.



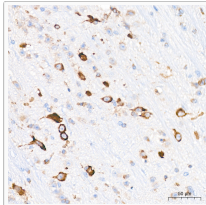
Western blot analysis of lysates from Hep G2 cells, using Alpha-2-Macroglobulin (Alpha-2-Macroglobulin (A2M) ) Rabbit mAb (STJ11102540) at 1:1000 dilution. Secondary antibody: HRP-conjugated Goat anti-Rabbit IgG (H+L) (STJS000856) at 1:10000 dilution. Lysates/proteins: 25 Mu g per lane. Blocking buffer: 3% nonfat dry milk in TBST. Detection: ECL Basic Kit Exposure time: 90s.



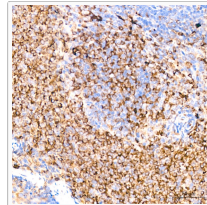
Immunohistochemistry analysis of paraffin-embedded Human cervix cancer tissue using Alpha-2-Macroglobulin (A2M) Rabbit mAb (STJ11102540) at a dilution of 1:200 (40x lens). High pressure antigen retrieval performed with 0.01M Citrate Bufferr (pH 6.0) prior to immunohistochemistry staining.



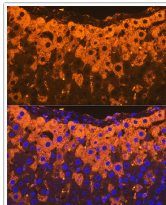
Immunohistochemistry analysis of paraffin-embedded Human tonsil tissue using Alpha-2-Macroglobulin (A2M) Rabbit mAb (STJ11102540) at a dilution of 1:200 (40x lens). High pressure antigen retrieval performed with 0.01M Citrate Bufferr (pH 6.0) prior to immunohistochemistry staining.



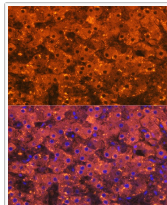
Immunohistochemistry analysis of paraffin-embedded Mouse brain tissue using Alpha-2-Macroglobulin (A2M) Rabbit mAb (STJ11102540) at a dilution of 1:200 (40x lens). High pressure antigen retrieval performed with 0.01M Citrate Bufferr (pH 6.0) prior to immunohistochemistry staining.



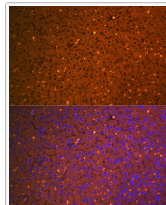
Immunohistochemistry analysis of paraffin-embedded Rat spleen tissue using Alpha-2-Macroglobulin (A2M) Rabbit mAb (STJ11102540) at a dilution of 1:200 (40x lens). High pressure antigen retrieval performed with 0.01M Citrate Bufferr (pH 6.0) prior to immunohistochemistry staining.



Immunofluorescence analysis of paraffin-embedded rat liver using Alpha-2-Macroglobulin (Alpha-2-Macroglobulin (A2M) ) Rabbit mAb (STJ11102540) at dilution of 1:100 (40x lens). Secondary antibody: Cy3-conjugated Goat anti-Rabbit IgG (H+L) (STJS001166) at 1:500 dilution. Blue: DAPI for nuclear staining.



Immunofluorescence analysis of paraffin-embedded human liver using Alpha-2-Macroglobulin (Alpha-2-Macroglobulin (A2M) ) Rabbit mAb (STJ11102540) at dilution of 1:100 (40x lens). Secondary antibody: Cy3-conjugated Goat anti-Rabbit IgG (H+L) (STJS001166) at 1:500 dilution. Blue: DAPI for nuclear staining.



Immunofluorescence analysis of paraffin-embedded mouse liver using Alpha-2-Macroglobulin (Alpha-2-Macroglobulin (A2M) ) Rabbit mAb (STJ11102540) at dilution of 1:100 (40x lens). Secondary antibody: Cy3-conjugated Goat anti-Rabbit IgG (H+L) (STJS001166) at 1:500 dilution. Blue: DAPI for nuclear staining.