

Anti-TINF2 antibody (210-309) [S9MR] (STJ11102539)

GENERAL INFORMATION

Product Type	Primary antibodies
Applications	WB/ELISA
Host / Source	Rabbit
Reactivity	Human/Mouse/Rat

PRODUCT PROPERTIES

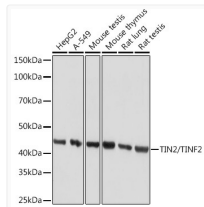
Clonality	Monoclonal
Concentration	Lot specific
Conjugation	Unconjugated
Purification	Affinity purification
Dilution Range	WB:1:500-1:1000 ELISA:Recommended starting concentration is 1 Mu g/mL. Please optimize the concentration based on your specific assay requirements.
Formulation	PBS with 0.02% Sodium Azide, 0.05% BSA, 50% Glycerol, pH 7.3.
Isotype	IgG
Molecular Weight	Protein Mw: 50kDa Observed Mw: 45kDa
Storage Instruction	Store at-20°C for up to 1 year from the date of receipt, and avoid repeat freeze-thaw cycles.

TARGET INFORMATION

Gene ID	26277
Gene Symbol	TINF2
UniProt ID	TINF2_HUMAN
Immunogen Region	210-309
Immunogen Sequence	NLAEPMEQNPPQQRLALHN PLPKAKPGTHLPQGPSSRTH PEPLAGRHFNLAPLGRRRVQ SQWASTRGGHKERPTVMLFP FRNLGSPTQVISKPEKKEEH
Specificity	Recombinant fusion protein containing a sequence corresponding to amino acids 210-309 of human TIN2/TINF2 (Q9BSI4).

ADDITIONAL INFORMATION

Note STRICTLY FOR FURTHER SCIENTIFIC RESEARCH USE ONLY (RUO). MUST NOT TO BE USED IN DIAGNOSTIC OR THERAPEUTIC APPLICATIONS.



Western blot analysis of various lysates using TIN2/TINF2 Rabbit mAb (STJ11102539) at 1:1000 dilution.

Secondary antibody: HRP-conjugated Goat anti-Rabbit IgG (H+L) (STJS000856) at 1:10000 dilution.

Lysates/proteins: 25 Mu g per lane.

Blocking buffer: 3% nonfat dry milk in TBST.

Detection: ECL Basic Kit

Exposure time: 10s.