

## Anti-LRP8 antibody (864-963) [S7MR] (STJ11102537)

### GENERAL INFORMATION

Product Type	Primary antibodies
Applications	WB/ELISA
Host / Source	Rabbit
Reactivity	Human/Mouse/Rat

### PRODUCT PROPERTIES

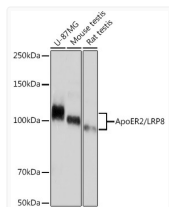
Clonality	Monoclonal
Concentration	Lot specific
Conjugation	Unconjugated
Purification	Affinity purification
Dilution Range	WB:1:1000-1:4000 ELISA:Recommended starting concentration is 1 Mu g/mL. Please optimize the concentration based on your specific assay requirements.
Formulation	PBS with 0.02% Sodium Azide, 0.05% BSA, 50% Glycerol, pH 7.3.
Isotype	IgG
Molecular Weight	Protein Mw: 106kDa Observed Mw: 100-106kDa
Storage Instruction	Store at -20°C for up to 1 year from the date of receipt, and avoid repeat freeze-thaw cycles.

### TARGET INFORMATION

Gene ID	<a href="#">7804</a>
Gene Symbol	<a href="#">LRP8</a>
UniProt ID	<a href="#">LRP8_HUMAN</a>
Immunogen Region	864-963
Immunogen Sequence	PVYRKTTEEEDEDELHIGRT AQIGHVYPAAISSFDRPLWA EPCLGETREPDPAPALKEL FVLPGEPRSQLHQLPKNPLS ELPVVKSKRVALSLEDDGLP
Specificity	A synthetic peptide corresponding to a sequence within amino acids 864-963 of human ApoER2/LRP8 (Q14114).

### ADDITIONAL INFORMATION

Note STRICTLY FOR FURTHER SCIENTIFIC RESEARCH USE ONLY (RUO). MUST NOT TO BE USED IN DIAGNOSTIC OR THERAPEUTIC APPLICATIONS.



Western blot analysis of various lysates using ApoER2/LRP8 Rabbit mAb (STJ11102537) at 1:1000 dilution.

Secondary antibody: HRP-conjugated Goat anti-Rabbit IgG (H+L) (STJS000856) at 1:10000 dilution.

Lysates/proteins: 25 Mu g per lane.

Blocking buffer: 3% nonfat dry milk in TBST.

Detection: ECL Basic Kit

Exposure time: 30s.