

## Anti-COL6A1 antibody (37-235) [S6MR] (STJ11102536)

### GENERAL INFORMATION

Product Type	Primary antibodies
Applications	WB/IHC-P/ELISA
Host / Source	Rabbit
Reactivity	Human/Mouse/Rat

### PRODUCT PROPERTIES

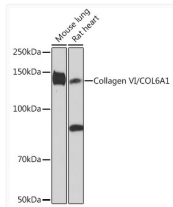
Clonality	Monoclonal
Concentration	Lot specific
Conjugation	Unconjugated
Purification	Affinity purification
Dilution Range	WB:1:500-1:1000 IHC-P:1:50-1:200 ELISA:Recommended starting concentration is 1 µg/mL. Please optimize the concentration based on your specific assay requirements.
Formulation	PBS with 0.02% Sodium Azide, 0.05% BSA, 50% Glycerol, pH 7.3.
Isotype	IgG
Molecular Weight	Protein Mw: 109kDa Observed Mw: 140kDa
Storage Instruction	Store at -20°C for up to 1 year from the date of receipt, and avoid repeat freeze-thaw cycles.

### TARGET INFORMATION

Gene ID	<a href="#">1291</a>
Gene Symbol	<a href="#">COL6A1</a>
UniProt ID	<a href="#">CO6A1_HUMAN</a>
Immunogen Region	37-235
Immunogen Sequence	DLFFVLDTSESVALRLKPYG ALVDKVKSFTRFIDNLRDR YYRCDRNLVWNAGALHYSDE VEIQGLTRMPGGRDALKSS VDAVKYFGKGYTDCAIKKG LEQLLVGGSHLKENKYLIVV TDGHPLEGYKEPCGGLEDVAV NEAKHLGVKVFVAITPDHL EPRLSIIATDHTYRRNFTAA DWGQSRDAEEAISQTIDTI
Specificity	Recombinant fusion protein containing a sequence corresponding to amino acids 37-235 of human Collagen VI/COL6A1 (P12109).

### ADDITIONAL INFORMATION

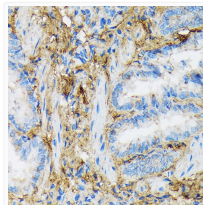
Note **STRICTLY FOR FURTHER SCIENTIFIC RESEARCH USE ONLY (RUO). MUST NOT TO BE USED IN DIAGNOSTIC OR THERAPEUTIC APPLICATIONS.**



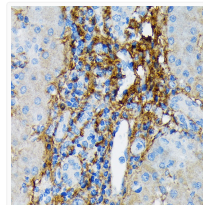
Western blot analysis of various lysates using Collagen VI/COL6A1 Rabbit mAb (STJ11102536) at 1:1000 dilution.

Secondary antibody: HRP-conjugated Goat anti-Rabbit IgG (H+L) (STJS000856) at 1:10000 dilution.

Lysates/proteins: 25 µg per lane.  
Blocking buffer: 3% nonfat dry milk in TBST.  
Detection: ECL Enhanced Kit  
Exposure time: 3min.



Immunohistochemistry analysis of paraffin-embedded Rat lung using Collagen VI/COL6A1 Rabbit mAb (STJ11102536) at dilution of 1:100 (40x lens). Microwave antigen retrieval performed with 0.01M Tris/EDTA Buffer (pH 9.0) prior to immunohistochemistry staining.



Immunohistochemistry analysis of paraffin-embedded Human liver using Collagen VI/COL6A1 Rabbit mAb (STJ11102536) at dilution of 1:100 (40x lens). Microwave antigen retrieval performed with 0.01M Tris/EDTA Buffer (pH 9.0) prior to immunohistochemistry staining.