

## Anti-EIF2A antibody (450-550) [S0MR] (STJ11102530)

### GENERAL INFORMATION

Product Type	Primary antibodies
Applications	WB/IHC-P/ELISA
Host / Source	Rabbit
Reactivity	Human/Mouse/Rat

### PRODUCT PROPERTIES

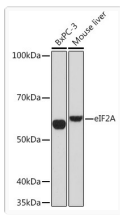
Clonality	Monoclonal
Concentration	Lot specific
Conjugation	Unconjugated
Purification	Affinity purification
Dilution Range	WB:1:500-1:1000 IHC-P:1:200-1:2000 ELISA:Recommended starting concentration is 1 Mu g/mL. Please optimize the concentration based on your specific assay requirements.
Formulation	PBS with 0.02% Sodium Azide, 0.05% BSA, 50% Glycerol, pH 7.3.
Isotype	IgG
Molecular Weight	Protein Mw: 65kDa Observed Mw: 60kDa
Storage Instruction	Store at -20°C for up to 1 year from the date of receipt, and avoid repeat freeze-thaw cycles.

### TARGET INFORMATION

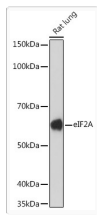
Gene ID	<a href="#">83939</a>
Gene Symbol	<a href="#">EIF2A</a>
UniProt ID	<a href="#">EIF2A_HUMAN</a>
Immunogen Region	450-550
Immunogen Sequence	ALRNKPITNSKLHEEEPPQN MKPQSGNDKPLSKTALKNQR KHEAKKAAKQEARSDKSPDL APTPAPQSTPRNTVSQSISG DPEIDKKIKNLKKKLKAIQ L
Specificity	A synthetic peptide corresponding to a sequence within amino acids 450-550 of human eIF2A (Q9BY44).

### ADDITIONAL INFORMATION

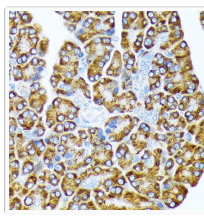
Note	STRICTLY FOR FURTHER SCIENTIFIC RESEARCH USE ONLY (RUO). MUST NOT TO BE USED IN DIAGNOSTIC OR THERAPEUTIC APPLICATIONS.
------	---



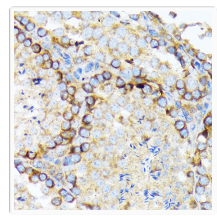
Western blot analysis of various lysates using eIF2A Rabbit mAb (STJ11102530) at 1:1000 dilution.  
 Secondary antibody: HRP-conjugated Goat anti-Rabbit IgG (H+L) (STJS000856) at 1:10000 dilution.  
 Lysates/proteins: 25 Mu g per lane.  
 Blocking buffer: 3% nonfat dry milk in TBST.  
 Detection: ECL Basic Kit  
 Exposure time: 90s.



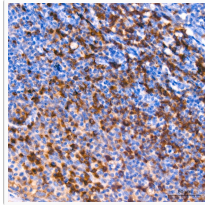
Western blot analysis of lysates from Rat lung, using eIF2A Rabbit mAb (STJ11102530) at 1:1000 dilution.  
 Secondary antibody: HRP-conjugated Goat anti-Rabbit IgG (H+L) (STJS000856) at 1:10000 dilution.  
 Lysates/proteins: 25 Mu g per lane.  
 Blocking buffer: 3% nonfat dry milk in TBST.  
 Detection: ECL Enhanced Kit  
 Exposure time: 3min.



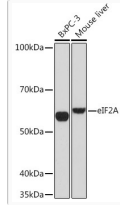
Immunohistochemistry analysis of paraffin-embedded Rat pancreas using eIF2A Rabbit mAb (STJ11102530) at dilution of 1:100 (40x lens).  
 Microwave antigen retrieval performed with 0.01M Tris/EDTA Buffer (pH 9.0) prior to immunohistochemistry staining.



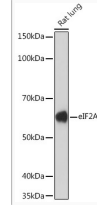
Immunohistochemistry analysis of paraffin-embedded Mouse testis using eIF2A Rabbit mAb (STJ11102530) at dilution of 1:100 (40x lens).  
 Microwave antigen retrieval performed with 0.01M Tris/EDTA Buffer (pH 9.0) prior to immunohistochemistry staining.



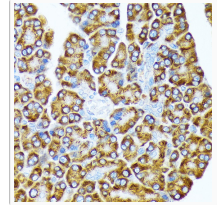
Immunohistochemistry analysis of paraffin-embedded Human tonsil tissue using eIF2A Rabbit mAb (STJ11102530) at a dilution of 1:200 (40x lens).  
 High pressure antigen retrieval performed with 0.01M Tris-EDTA Buffer (pH 9.0) prior to immunohistochemistry staining.



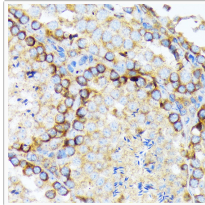
Western blot analysis of various lysates using eIF2A Rabbit mAb (STJ11102530) at 1:1000 dilution.  
 Secondary antibody: HRP-conjugated Goat anti-Rabbit IgG (H+L) (STJS000856) at 1:10000 dilution.  
 Lysates/proteins: 25 Mu g per lane.  
 Blocking buffer: 3% nonfat dry milk in TBST.  
 Detection: ECL Basic Kit  
 Exposure time: 90s.



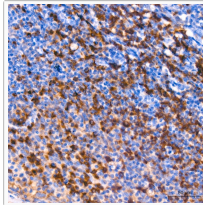
Western blot analysis of lysates from Rat lung, using eIF2A Rabbit mAb (STJ11102530) at 1:1000 dilution.  
 Secondary antibody: HRP-conjugated Goat anti-Rabbit IgG (H+L) (STJS000856) at 1:10000 dilution.  
 Lysates/proteins: 25 Mu g per lane.  
 Blocking buffer: 3% nonfat dry milk in TBST.  
 Detection: ECL Enhanced Kit  
 Exposure time: 3min.



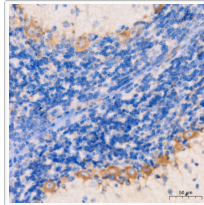
Immunohistochemistry analysis of paraffin-embedded Rat pancreas using eIF2A Rabbit mAb (STJ11102530) at dilution of 1:100 (40x lens).  
 Microwave antigen retrieval performed with 0.01M Tris/EDTA Buffer (pH 9.0) prior to immunohistochemistry staining.



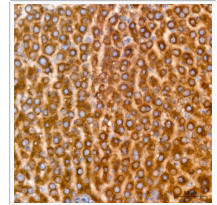
Immunohistochemistry analysis of paraffin-embedded Mouse testis using eIF2A Rabbit mAb (STJ11102530) at dilution of 1:100 (40x lens).  
 Microwave antigen retrieval performed with 0.01M Tris-EDTA Buffer (pH 9.0) prior to immunohistochemistry staining.



Immunohistochemistry analysis of paraffin-embedded Human tonsil tissue using eIF2A Rabbit mAb (STJ11102530) at a dilution of 1:200 (40x lens).  
 High pressure antigen retrieval performed with 0.01M Tris-EDTA Buffer (pH 9.0) prior to immunohistochemistry staining.



Immunohistochemistry analysis of paraffin-embedded Rat brain tissue using eIF2A Rabbit mAb (STJ11102530) at a dilution of 1:200 (40x lens).  
 High pressure antigen retrieval performed with 0.01M Tris-EDTA Buffer (pH 9.0) prior to immunohistochemistry staining.



Immunohistochemistry analysis of paraffin-embedded Rat liver tissue using eIF2A Rabbit mAb (STJ11102530) at a dilution of 1:200 (40x lens).  
 High pressure antigen retrieval performed with 0.01M Tris-EDTA Buffer (pH 9.0) prior to immunohistochemistry staining.