

## Anti-EWSR1 antibody (1-189) [S3MR] (STJ11102513)

### GENERAL INFORMATION

|               |                          |
|---------------|--------------------------|
| Product Type  | Primary antibodies       |
| Applications  | WB/IHC-P/IF/ICC/IP/ELISA |
| Host / Source | Rabbit                   |
| Reactivity    | Human/Mouse/Rat          |

### PRODUCT PROPERTIES

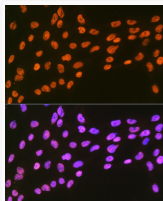
|                     |  |
|---------------------|--|
| Clonality           | Monoclonal   |
| Concentration       | Lot specific   |
| Conjugation         | Unconjugated   |
| Purification        | Affinity purification  |
| Dilution Range      | WB:1:500-1:1000<br>IHC-P:1:50-1:200<br>IF/ICC:1:50-1:200<br>IP:0.5 Mu g-4 Mu g antibody for 200 Mu g-400 Mu g extracts of whole cells<br>ELISA:Recommended starting concentration is 1 Mu g/mL. Please optimize the concentration based on your specif |
| Formulation         | PBS with 0.02% Sodium Azide, 0.05% BSA, 50% Glycerol, pH 7.3.  |
| Isotype             | IgG  |
| Molecular Weight    | Protein Mw: 68kDa<br>Observed Mw: 90kDa  |
| Storage Instruction | Store at-20°C for up to 1 year from the date of receipt, and avoid repeat freeze-thaw cycles.  |

### TARGET INFORMATION

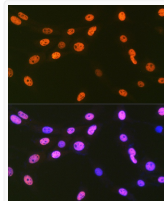
|                    |  |
|--------------------|--|
| Gene ID            | <a href="#">2130</a>   |
| Gene Symbol        | <a href="#">EWSR1</a>  |
| UniProt ID         | <a href="#">EWS_HUMAN</a>  |
| Immunogen Region   | 1-189  |
| Immunogen Sequence | MASTDYSTYSQAAAQQGYSA YTAQPTQGYAQTTQAYGQQS YGTYGQPTDVSYTQAQTAT YGQTAYATSYGQPPTGYTTP TAPQAYSQPVQGGYGTGAYDT TTATVTTTQASYAAQSAYGT QPAYPAYGQQPAATAPTRPQ DGNKPTETSQPSQSSGGYNQ PSLGYGQSNYSYPQVPGSYP MQPVTAPPS |
| Specificity        | Recombinant fusion protein containing a sequence corresponding to amino acids 1-189 of human EWSR1 (Q01844).   |

### ADDITIONAL INFORMATION

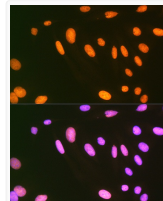
Note STRICTLY FOR FURTHER SCIENTIFIC RESEARCH USE ONLY (RUO). MUST NOT TO BE USED IN DIAGNOSTIC OR THERAPEUTIC APPLICATIONS.



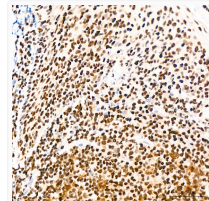
Western blot analysis of various lysates using EWSR1 Rabbit mAb (STJ11102513) at 1:1000 dilution.  
Secondary antibody: HRP-conjugated Goat anti-Rabbit IgG (H+L) (STJS000856) at 1:10000 dilution.  
Lysates/proteins: 25 Mu g per lane.  
Blocking buffer: 3% nonfat dry milk in TBST.  
Detection: ECL Basic Kit  
Exposure time: 5s.



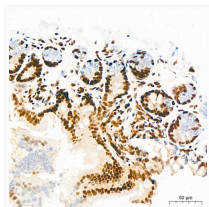
Immunohistochemistry analysis of paraffin-embedded Human breast cancer tissue using EWSR1 Rabbit mAb (STJ11102513) at a dilution of 1:200 (40x lens). High pressure antigen retrieval performed with 0.01M Citrate Bufferr (pH 6.0) prior to immunohistochemistry staining.



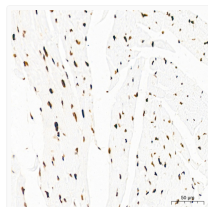
Immunohistochemistry analysis of paraffin-embedded Human breast tissue using EWSR1 Rabbit mAb (STJ11102513) at a dilution of 1:200 (40x lens). High pressure antigen retrieval performed with 0.01M Citrate Bufferr (pH 6.0) prior to immunohistochemistry staining.



Immunohistochemistry analysis of paraffin-embedded Human thyroid tissue using EWSR1 Rabbit mAb (STJ11102513) at a dilution of 1:200 (40x lens). High pressure antigen retrieval performed with 0.01M Citrate Bufferr (pH 6.0) prior to immunohistochemistry staining.



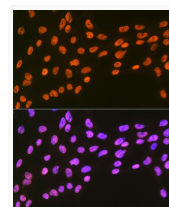
Immunohistochemistry analysis of paraffin-embedded Human tonsil tissue using EWSR1 Rabbit mAb (STJ11102513) at a dilution of 1:200 (40x lens). High pressure antigen retrieval performed with 0.01M Citrate Bufferr (pH 6.0) prior to immunohistochemistry staining.



Immunohistochemistry analysis of paraffin-embedded Mouse colon tissue using EWSR1 Rabbit mAb (STJ11102513) at a dilution of 1:200 (40x lens). High pressure antigen retrieval performed with 0.01M Citrate Bufferr (pH 6.0) prior to immunohistochemistry staining.

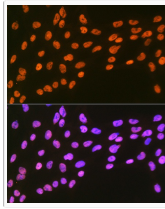


Immunohistochemistry analysis of paraffin-embedded Mouse heart tissue using EWSR1 Rabbit mAb (STJ11102513) at a dilution of 1:200 (40x lens). High pressure antigen retrieval performed with 0.01M Citrate Bufferr (pH 6.0) prior to immunohistochemistry staining.

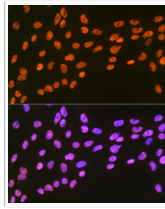


Western blot analysis of various lysates using EWSR1 Rabbit mAb (STJ11102513) at 1:1000 dilution.  
Secondary antibody: HRP Goat Anti-Rabbit IgG (H+L) (STJS000856) at 1:10000 dilution.  
Lysates/proteins: 25 Mu g per lane.  
Blocking buffer: 3% nonfat dry milk in TBST.  
Detection: ECL Basic Kit  
Exposure time: 5s.

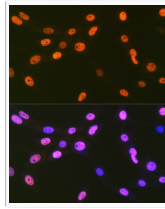
**FOR RESEARCH USE ONLY.** Not intended for diagnostic or therapeutic use.



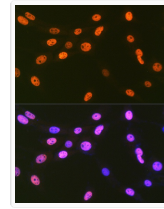
Immunohistochemistry analysis of EWSR1 in paraffin-embedded human breast cancer tissue using EWSR1 Rabbit mAb (STJ11102513) at a dilution of 1:200 (40x lens). High pressure antigen retrieval was performed with 0.01 M citrate buffer (pH 6.0) prior to immunohistochemistry staining.



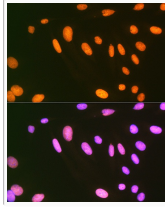
Immunofluorescence analysis of C6 cells using EWSR1 Rabbit mAb (STJ11102513) at dilution of 1:100 (40x lens). Secondary antibody: Cy3 Goat Anti-Rabbit IgG (H+L) (STJS001166) at 1:500 dilution. Blue: DAPI for nuclear staining.



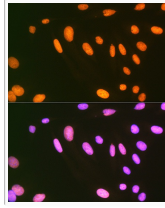
Immunohistochemistry analysis of EWSR1 in paraffin-embedded human breast tissue using EWSR1 Rabbit mAb (STJ11102513) at a dilution of 1:200 (40x lens). High pressure antigen retrieval was performed with 0.01 M citrate buffer (pH 6.0) prior to immunohistochemistry staining.



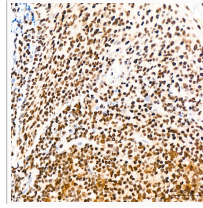
Immunofluorescence analysis of NIH-3T3 cells using EWSR1 Rabbit mAb (STJ11102513) at dilution of 1:100 (40x lens). Secondary antibody: Cy3 Goat Anti-Rabbit IgG (H+L) (STJS001166) at 1:500 dilution. Blue: DAPI for nuclear staining.



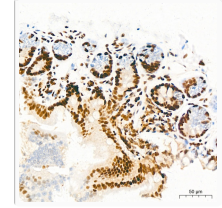
Immunohistochemistry analysis of EWSR1 in paraffin-embedded human thyroid tissue using EWSR1 Rabbit mAb (STJ11102513) at a dilution of 1:200 (40x lens). High pressure antigen retrieval was performed with 0.01 M citrate buffer (pH 6.0) prior to immunohistochemistry staining.



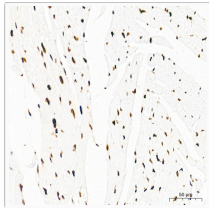
Immunofluorescence analysis of U-2 OS cells using EWSR1 Rabbit mAb (STJ11102513) at dilution of 1:100 (40x lens). Secondary antibody: Cy3 Goat Anti-Rabbit IgG (H+L) (STJS001166) at 1:500 dilution. Blue: DAPI for nuclear staining.



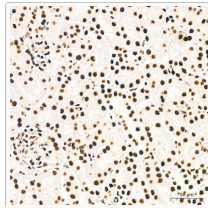
Immunohistochemistry analysis of EWSR1 in paraffin-embedded human tonsil tissue using EWSR1 Rabbit mAb (STJ11102513) at a dilution of 1:200 (40x lens). High pressure antigen retrieval was performed with 0.01 M citrate buffer (pH 6.0) prior to immunohistochemistry staining.



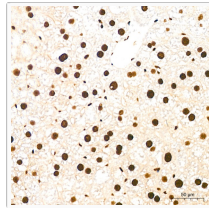
Immunohistochemistry analysis of EWSR1 in paraffin-embedded mouse colon tissue using EWSR1 Rabbit mAb (STJ11102513) at a dilution of 1:200 (40x lens). High pressure antigen retrieval was performed with 0.01 M citrate buffer (pH 6.0) prior to immunohistochemistry staining.



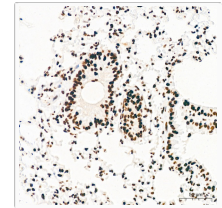
Immunohistochemistry analysis of EWSR1 in paraffin-embedded mouse heart tissue using EWSR1 Rabbit mAb (STJ11102513) at a dilution of 1:200 (40x lens). High pressure antigen retrieval was performed with 0.01 M citrate buffer (pH 6.0) prior to immunohistochemistry staining.



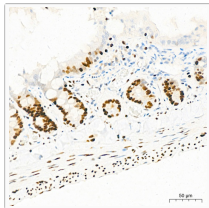
Immunohistochemistry analysis of EWSR1 in paraffin-embedded mouse kidney tissue using EWSR1 Rabbit mAb (STJ11102513) at a dilution of 1:200 (40x lens). High pressure antigen retrieval was performed with 0.01 M citrate buffer (pH 6.0) prior to immunohistochemistry staining.



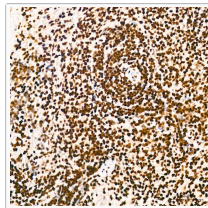
Immunohistochemistry analysis of EWSR1 in paraffin-embedded mouse liver tissue using EWSR1 Rabbit mAb (STJ11102513) at a dilution of 1:200 (40x lens). High pressure antigen retrieval was performed with 0.01 M citrate buffer (pH 6.0) prior to immunohistochemistry staining.



Immunohistochemistry analysis of EWSR1 in paraffin-embedded mouse lung tissue using EWSR1 Rabbit mAb (STJ11102513) at a dilution of 1:200 (40x lens). High pressure antigen retrieval was performed with 0.01 M citrate buffer (pH 6.0) prior to immunohistochemistry staining.



Immunohistochemistry analysis of EWSR1 in paraffin-embedded rat colon tissue using EWSR1 Rabbit mAb (STJ11102513) at a dilution of 1:200 (40x lens). High pressure antigen retrieval was performed with 0.01 M citrate buffer (pH 6.0) prior to immunohistochemistry staining.



Immunohistochemistry analysis of EWSR1 in paraffin-embedded rat spleen tissue using EWSR1 Rabbit mAb (STJ11102513) at a dilution of 1:200 (40x lens). High pressure antigen retrieval was performed with 0.01 M citrate buffer (pH 6.0) prior to immunohistochemistry staining.