

Anti-RPE65 antibody (400-500) [S6MR] (STJ11102506)

GENERAL INFORMATION

Product Type	Primary antibodies
Applications	WB/IHC-P/IF/ICC/ELISA
Host / Source	Rabbit
Reactivity	Mouse/Rat

PRODUCT PROPERTIES

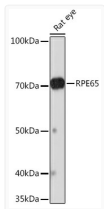
Clonality	Monoclonal
Concentration	Lot specific
Conjugation	Unconjugated
Purification	Affinity purification
Dilution Range	WB:1:500-1:1000 IHC-P:1:100-1:1000 IF/CC:1:100-1:1000 ELISA:Recommended starting concentration is 1 µg/mL. Please optimize the concentration based on your specific assay requirements.
Formulation	PBS with 0.02% Sodium Azide, 0.05% BSA, 50% Glycerol, pH 7.3.
Isotype	IgG
Molecular Weight	Protein Mw: 61kDa Observed Mw: 70kDa
Storage Instruction	Store at -20°C for up to 1 year from the date of receipt, and avoid repeat freeze-thaw cycles.

TARGET INFORMATION

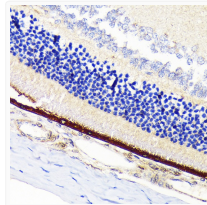
Gene ID	6121
Gene Symbol	RPE65
UniProt ID	RPE65_HUMAN
Immunogen Region	400-500
Immunogen Sequence	TIWLEPEVLFSGPRQAFEFQ QINYQKYCGKPYTYAYGLGL NHFVDPRLCKLNVKTKETWV WQEPDSYPSEPIFVSHPDAL EEDDGVVLSVVVSPGAGQKP A
Specificity	A synthetic peptide corresponding to a sequence within amino acids 400-500 of human RPE65 (Q16518).

ADDITIONAL INFORMATION

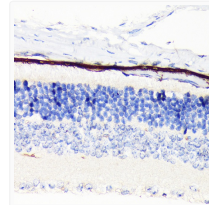
Note STRICTLY FOR FURTHER SCIENTIFIC RESEARCH USE ONLY (RUO). MUST NOT TO BE USED IN DIAGNOSTIC OR THERAPEUTIC APPLICATIONS.



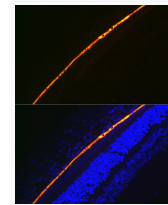
Western blot analysis of lysates from Rat eye, using RPE65 Rabbit mAb (STJ11102506) at 1:1000 dilution.
Secondary antibody: HRP-conjugated Goat anti-Rabbit IgG (H+L) (STJS000856) at 1:10000 dilution.
Lysates/proteins: 25 µg per lane.
Blocking buffer: 3% nonfat dry milk in TBST.
Detection: ECL Basic Kit
Exposure time: 3min.



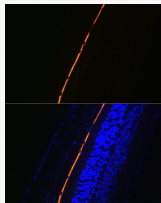
Immunohistochemistry analysis of paraffin-embedded Rat retina using RPE65 Rabbit mAb (STJ11102506) at dilution of 1:100 (40x lens).
Microwave antigen retrieval performed with 0.01M Tris/EDTA Buffer (pH 9.0) prior to immunohistochemistry staining.



Immunohistochemistry analysis of paraffin-embedded Mouse retina using RPE65 Rabbit mAb (STJ11102506) at dilution of 1:100 (40x lens).
Microwave antigen retrieval performed with 0.01M Tris/EDTA Buffer (pH 9.0) prior to immunohistochemistry staining.



Immunofluorescence analysis of paraffin-embedded rat eye using RPE65 Rabbit mAb (STJ11102506) at dilution of 1:100 (40x lens).
Secondary antibody: Cy3-conjugated Goat anti-Rabbit IgG (H+L) (STJS001166) at 1:500 dilution.
Blue: DAPI for nuclear staining.



Immunofluorescence analysis of paraffin-embedded mouse eye using RPE65 Rabbit mAb (STJ11102506) at dilution of 1:100 (40x lens).
Secondary antibody: Cy3-conjugated Goat anti-Rabbit IgG (H+L) (STJS001166) at 1:500 dilution.
Blue: DAPI for nuclear staining.