

## Anti-PSMB9 antibody (125-219) [S8MR] (STJ11102488)

### GENERAL INFORMATION

|               |                    |
|---------------|--------------------|
| Product Type  | Primary antibodies |
| Applications  | WB/IHC-P/ELISA     |
| Host / Source | Rabbit             |
| Reactivity    | Human/Mouse/Rat    |

### PRODUCT PROPERTIES

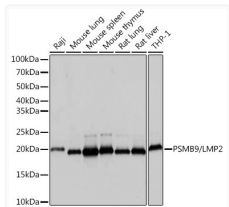
|                     |  |
|---------------------|--|
| Clonality           | Monoclonal   |
| Concentration       | Lot specific   |
| Conjugation         | Unconjugated   |
| Purification        | Affinity purification  |
| Dilution Range      | WB:1:500-1:2000<br>IHC-P:1:50-1:200<br>ELISA:Recommended starting concentration is 1 µg/mL. Please optimize the concentration based on your specific assay requirements. |
| Formulation         | PBS with 0.02% Sodium Azide, 0.05% BSA, 50% Glycerol, pH 7.3.  |
| Isotype             | IgG  |
| Molecular Weight    | Protein Mw: 23kDa<br>Observed Mw: 21kDa  |
| Storage Instruction | Store at -20°C for up to 1 year from the date of receipt, and avoid repeat freeze-thaw cycles.   |

### TARGET INFORMATION

|                    |   |
|--------------------|---|
| Gene ID            | <a href="#">5698</a>  |
| Gene Symbol        | <a href="#">PSMB9</a>   |
| UniProt ID         | <a href="#">PSB9_HUMAN</a>  |
| Immunogen Region   | 125-219   |
| Immunogen Sequence | QREGGQVYGTLGGMLTRQPF AIGGSGSTFIYGYVDAAYKP GMSPEECRRFTTDAIALAMS<br>RDGSSGGVIYLVTTAAGVD HRVILGNELPKFYDE               |
| Specificity        | Recombinant fusion protein containing a sequence corresponding to amino acids 125-219 of human PSMB9/LMP2 (P28065). |

### ADDITIONAL INFORMATION

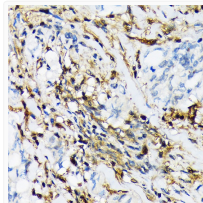
Note STRICTLY FOR FURTHER SCIENTIFIC RESEARCH USE ONLY (RUO). MUST NOT TO BE USED IN DIAGNOSTIC OR THERAPEUTIC APPLICATIONS.



Western blot analysis of various lysates using PSMB9/LMP2 Rabbit mAb (STJ11102488) at 1:1000 dilution.

Secondary antibody: HRP-conjugated Goat anti-Rabbit IgG (H+L) (STJS000856) at 1:10000 dilution.

Lysates/proteins: 25 µg per lane.  
Blocking buffer: 3% nonfat dry milk in TBST.  
Detection: ECL Basic Kit  
Exposure time: 1s.



Immunohistochemistry analysis of paraffin-embedded Human lung cancer using PSMB9/LMP2 Rabbit mAb (STJ11102488) at dilution of 1:100 (40x lens). Microwave antigen retrieval performed with 0.01M Tris/EDTA Buffer (pH 9.0) prior to immunohistochemistry staining.