

## Anti-SIRPA antibody (395-495) [S7MR] (STJ11102487)

### GENERAL INFORMATION

Product Type	Primary antibodies
Applications	WB/IF/ICC/ELISA
Host / Source	Rabbit
Reactivity	Human/Mouse/Rat

### PRODUCT PROPERTIES

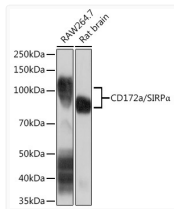
Clonality	Monoclonal
Concentration	Lot specific
Conjugation	Unconjugated
Purification	Affinity purification
Dilution Range	WB:1:1000-1:6000 IF/CC:1:50-1:200 ELISA:Recommended starting concentration is 1 Mu g/mL. Please optimize the concentration based on your specific assay requirements.
Formulation	PBS with 0.02% Sodium Azide, 0.05% BSA, 50% Glycerol, pH 7.3.
Isotype	IgG
Molecular Weight	Protein Mw: 55kDa Observed Mw: 85kDa (Human) /100kDa (Rat) /120kDa (Mouse)
Storage Instruction	Store at -20°C for up to 1 year from the date of receipt, and avoid repeat freeze-thaw cycles.

### TARGET INFORMATION

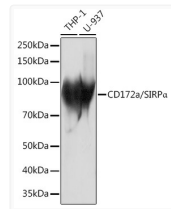
Gene ID	<a href="#">140885</a>
Gene Symbol	<a href="#">SIRPA</a>
UniProt ID	<a href="#">SHPS1_HUMAN</a>
Immunogen Region	395-495
Immunogen Sequence	RIRQKKAQGSTSTRLHEPE KNAREITQDNDITYADLNL PKGKKPAPQAAEPNNHTEYA SIQTSPQPASEDTLTYADLD MVHLNRTPKQPAPKPEPSFS E
Specificity	Recombinant fusion protein containing a sequence corresponding to amino acids 395-495 of human CD172a/SIRP Alpha (P78324).

### ADDITIONAL INFORMATION

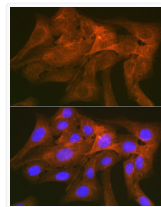
Note STRICTLY FOR FURTHER SCIENTIFIC RESEARCH USE ONLY (RUO). MUST NOT TO BE USED IN DIAGNOSTIC OR THERAPEUTIC APPLICATIONS.



Western blot analysis of various lysates using CD172a/SIRP Alpha Rabbit mAb (STJ11102487) at 1:1000 dilution incubated at room temperature for 1.5 hours.  
Secondary antibody: HRP-conjugated Goat anti-Rabbit IgG (H+L) (STJS000856) at 1:10000 dilution.  
Lysates/proteins: 25 Mu g per lane.  
Blocking buffer: 3% nonfat dry milk in TBST.  
Detection: ECL Basic Kit  
Exposure time: 30s.



Western blot analysis of various lysates using CD172a/SIRP Alpha Rabbit mAb (STJ11102487) at 1:1000 dilution incubated at room temperature for 1.5 hours.  
Secondary antibody: HRP-conjugated Goat anti-Rabbit IgG (H+L) (STJS000856) at 1:10000 dilution.  
Lysates/proteins: 25 Mu g per lane.  
Blocking buffer: 3% nonfat dry milk in TBST.  
Detection: ECL Basic Kit  
Exposure time: 1s.



Immunofluorescence analysis of U-2 OS cells using CD172a/SIRP Alpha Rabbit mAb (STJ11102487) at dilution of 1:100 (40x lens).  
Secondary antibody: Cy3-conjugated Goat anti-Rabbit IgG (H+L) (STJS001166) at 1:500 dilution.  
Blue: DAPI for nuclear staining.