

## Anti-LIN28B antibody (1-163) [S1MR] (STJ11102481)

### GENERAL INFORMATION

Product Type	Primary antibodies
Applications	WB/IHC-P/ELISA
Host / Source	Rabbit
Reactivity	Human

### PRODUCT PROPERTIES

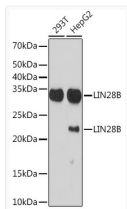
Clonality	Monoclonal
Concentration	Lot specific
Conjugation	Unconjugated
Purification	Affinity purification
Dilution Range	WB:1:500-1:1000 IHC-P:1:50-1:200 ELISA:Recommended starting concentration is 1 $\mu$ g/mL. Please optimize the concentration based on your specific assay requirements.
Formulation	PBS with 0.02% Sodium Azide, 0.05% BSA, 50% Glycerol, pH 7.3.
Isotype	IgG
Molecular Weight	Protein Mw: 27kDa Observed Mw: 21kDa/32kDa
Storage Instruction	Store at -20°C for up to 1 year from the date of receipt, and avoid repeat freeze-thaw cycles.

### TARGET INFORMATION

Gene ID	<a href="#">389421</a>
Gene Symbol	<a href="#">LIN28B</a>
UniProt ID	<a href="#">LN28B_HUMAN</a>
Immunogen Region	1-163
Immunogen Sequence	MAEGGASKGGGEEPGLPEP AEEESQVLRGTGHCKWFNVR MGFQGFISMINREGSPLDIPV DVFVHQSKLFMEGFRLKEG EPVEFTFKKSSKGLSIRVT GPGGSPCLGSERRPKGKTQ KRRPKGDRCYNGCGLDHHAKECSLPPQPKKCHYCQSIMHM VAN
Specificity	Recombinant fusion protein containing a sequence corresponding to amino acids 1-163 of human LIN28B (Q6ZN17).

### ADDITIONAL INFORMATION

Note STRICTLY FOR FURTHER SCIENTIFIC RESEARCH USE ONLY (RUO). MUST NOT TO BE USED IN DIAGNOSTIC OR THERAPEUTIC APPLICATIONS.



Western blot analysis of various lysates using LIN28B Rabbit mAb (STJ11102481) at 1:1000 dilution.

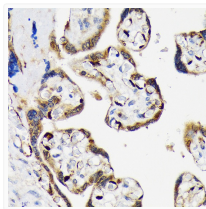
Secondary antibody: HRP-conjugated Goat anti-Rabbit IgG (H+L) (STJS000856) at 1:10000 dilution.

Lysates/proteins: 25  $\mu$ g per lane.

Blocking buffer: 3% nonfat dry milk in TBST.

Detection: ECL Basic Kit

Exposure time: 3min.



Immunohistochemistry analysis of paraffin-embedded Human placenta using LIN28B Rabbit mAb (STJ11102481) at dilution of 1:100 (40x lens). Microwave antigen retrieval performed with 0.01M Tris/EDTA Buffer (pH 9.0) prior to immunohistochemistry staining.