

Anti-UQCRFS1 antibody (175-274) [S8MR] (STJ11102478)

GENERAL INFORMATION

Product Type	Primary antibodies
Applications	WB/IF/ICC/ELISA
Host / Source	Rabbit
Reactivity	Human/Mouse/Rat

PRODUCT PROPERTIES

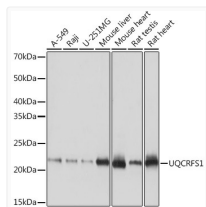
Clonality	Monoclonal
Concentration	Lot specific
Conjugation	Unconjugated
Purification	Affinity purification
Dilution Range	WB:1:500-1:2000 IF/CC:1:50-1:200 ELISA:Recommended starting concentration is 1 Mu g/mL. Please optimize the concentration based on your specific assay requirements.
Formulation	PBS with 0.02% Sodium Azide, 0.05% BSA, 50% Glycerol, pH 7.3.
Isotype	IgG
Molecular Weight	Protein Mw: 30kDa Observed Mw: 22kDa
Storage Instruction	Store at -20°C for up to 1 year from the date of receipt, and avoid repeat freeze-thaw cycles.

TARGET INFORMATION

Gene ID	7386
Gene Symbol	UQCRFS1
UniProt ID	UCRL_HUMAN
Immunogen Region	175-274
Immunogen Sequence	FVRHRHTQKEIEQEAAVELSQ LRD PQHDLDRVKKPEWVILI GVCTHLGCVPIANAGDFGGY YCPCHGSHYDASGRIRLPGA PLNLEVPTYEFTSDDMVIVG
Specificity	A synthetic peptide corresponding to a sequence within amino acids 175-274 of human UQCRFS1 (P47985).

ADDITIONAL INFORMATION

Note STRICTLY FOR FURTHER SCIENTIFIC RESEARCH USE ONLY (RUO). MUST NOT TO BE USED IN DIAGNOSTIC OR THERAPEUTIC APPLICATIONS.

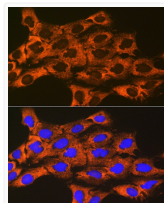


Western blot analysis of various lysates using UQCRFS1 Rabbit mAb (STJ11102478) at 1:1000 dilution.

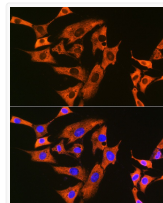
Secondary antibody: HRP-conjugated Goat anti-Rabbit IgG (H+L) (STJS000856) at 1:10000 dilution.

Lysates/proteins: 25 Mu g per lane.
Blocking buffer: 3% nonfat dry milk in TBST.

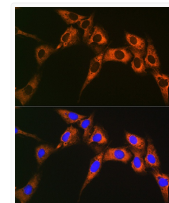
Detection: ECL Basic Kit
Exposure time: 1s.



Immunofluorescence analysis of C6 cells using UQCRFS1 Rabbit mAb (STJ11102478) at dilution of 1:100 (40x lens). Secondary antibody: Cy3-conjugated Goat anti-Rabbit IgG (H+L) (STJS001166) at 1:500 dilution. Blue: DAPI for nuclear staining.



Immunofluorescence analysis of NIH-3T3 cells using UQCRFS1 Rabbit mAb (STJ11102478) at dilution of 1:100 (40x lens). Secondary antibody: Cy3-conjugated Goat anti-Rabbit IgG (H+L) (STJS001166) at 1:500 dilution. Blue: DAPI for nuclear staining.



Immunofluorescence analysis of U-2 OS cells using UQCRFS1 Rabbit mAb (STJ11102478) at dilution of 1:100 (40x lens). Secondary antibody: Cy3-conjugated Goat anti-Rabbit IgG (H+L) (STJS001166) at 1:500 dilution. Blue: DAPI for nuclear staining.