

Anti-SH3PXD2A antibody (806-1105) (STJ11102477)

GENERAL INFORMATION

Product Type	Primary antibodies
Applications	WB/IF/ICC/ELISA
Host / Source	Rabbit
Reactivity	Human/Mouse

PRODUCT PROPERTIES

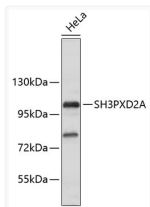
Clonality	Polyclonal
Concentration	Lot specific
Conjugation	Unconjugated
Purification	Affinity purification
Dilution Range	WB:1:500-1:2000 IF/CC:1:50-1:200 ELISA:Recommended starting concentration is 1 Mu g/mL. Please optimize the concentration based on your specific assay requirements.
Formulation	PBS with 0.01% Thimerosal, 50% Glycerol, pH 7.3.
Isotype	IgG
Molecular Weight	Protein Mw: 125kDa Observed Mw: 100kDa
Storage Instruction	Store at -20°C for up to 1 year from the date of receipt, and avoid repeat freeze-thaw cycles.

TARGET INFORMATION

Gene ID	9644
Gene Symbol	SH3PXD2A
UniProt ID	SPD2A_HUMAN
Immunogen Region	806-1105
Immunogen Sequence	TKKEWEGPATSYMTC SAYQK VQDSEISFPAGVEVQVLEKQ ESGWVYVRFGELEGWAPSHY LVLDENEQPDPSGKELDTVP AKGRQNEGKSDSLEKIERRV QALNTVNQSKKATPPIPSKP PGGFGKTSGTPAVKMRNGVR QVAVRPQSVFVSPPPKDNLL SCALRRNESLTATDGLRGVR RNSSFSTARSAAAEAKGRLA ERAASQGS DSPLLPAQRNSI PVSPVVRPKPIEKSQFIHNN
Specificity	Recombinant fusion protein containing a sequence corresponding to amino acids 806-1105 of human SH3PXD2A (NP_055446.2).

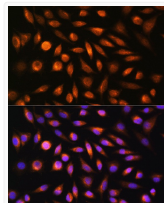
ADDITIONAL INFORMATION

Note STRICTLY FOR FURTHER SCIENTIFIC RESEARCH USE ONLY (RUO). MUST NOT TO BE USED IN DIAGNOSTIC OR THERAPEUTIC APPLICATIONS.



Western blot analysis of lysates from HeLa cells, using SH3PXD2A Rabbit pAb (STJ11102477). Secondary antibody: HRP-conjugated Goat anti-Rabbit IgG (H+L) (STJS000856) at 1:10000 dilution.

Lysates/proteins: 25 Mu g per lane.
Blocking buffer: 3% nonfat dry milk in TBST.



Immunofluorescence analysis of L929 cells using SH3PXD2A Rabbit pAb (STJ11102477) at dilution of 1:100. Secondary antibody: Cy3-conjugated Goat anti-Rabbit IgG (H+L) (STJS001166) at 1:500 dilution. Blue: DAPI for nuclear staining.