

Anti-RLBP1 antibody (1-100) [S7MR] (STJ11102467)

GENERAL INFORMATION

Product Type	Primary antibodies
Applications	WB/IHC-P/IF/ICC/ELISA
Host / Source	Rabbit
Reactivity	Human/Mouse/Rat

PRODUCT PROPERTIES

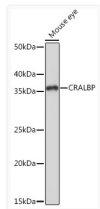
Clonality	Monoclonal
Concentration	Lot specific
Conjugation	Unconjugated
Purification	Affinity purification
Dilution Range	WB:1:1000-1:6000 IHC-P:1:100-1:1000 IF/CC:1:200-1:2000 ELISA:Recommended starting concentration is 1 µg/mL. Please optimize the concentration based on your specific assay requirements.
Formulation	PBS with 0.02% Sodium Azide, 0.05% BSA, 50% Glycerol, pH 7.3.
Isotype	IgG
Molecular Weight	Protein Mw: 36kDa Observed Mw: 36kDa
Storage Instruction	Store at -20°C for up to 1 year from the date of receipt, and avoid repeat freeze-thaw cycles.

TARGET INFORMATION

Gene ID	6017
Gene Symbol	RLBP1
UniProt ID	RLBP1_HUMAN
Immunogen Region	1-100
Immunogen Sequence	MSEGVGTFRMVPEEEQELRA QLEQLTTKDHGPFVFGPCSQL PRHTLQKAKDELNEREETRE EAVRELQEMVQAQAASGEEL AVAVAERVQEKDSGFFLRFI
Specificity	A synthetic peptide corresponding to a sequence within amino acids 1-100 of human CRALBP (P12271).

ADDITIONAL INFORMATION

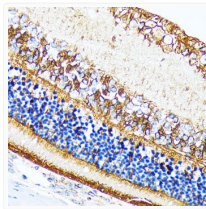
Note **STRICTLY FOR FURTHER SCIENTIFIC RESEARCH USE ONLY (RUO). MUST NOT TO BE USED IN DIAGNOSTIC OR THERAPEUTIC APPLICATIONS.**



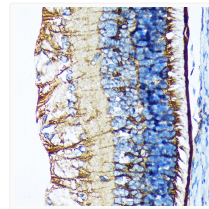
Western blot analysis of lysates from Mouse eye, using CRALBP Rabbit mAb (STJ11102467) at 1:1000 dilution.

Secondary antibody: HRP-conjugated Goat anti-Rabbit IgG (H+L) (STJS000856) at 1:10000 dilution.

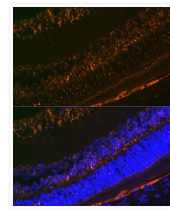
Lysates/proteins: 25 µg per lane.
Blocking buffer: 3% nonfat dry milk in TBST.
Detection: ECL Basic Kit
Exposure time: 1s.



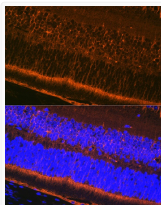
Immunohistochemistry analysis of paraffin-embedded Rat retina using CRALBP Rabbit mAb (STJ11102467) at dilution of 1:100 (40x lens).
Microwave antigen retrieval performed with 0.01M Tris/EDTA Buffer (pH 9.0) prior to immunohistochemistry staining.



Immunohistochemistry analysis of paraffin-embedded Mouse retina using CRALBP Rabbit mAb (STJ11102467) at dilution of 1:100 (40x lens).
Microwave antigen retrieval performed with 0.01M Tris/EDTA Buffer (pH 9.0) prior to immunohistochemistry staining.



Immunofluorescence analysis of paraffin-embedded rat eye using CRALBP Rabbit mAb (STJ11102467) at dilution of 1:100 (40x lens).
Secondary antibody: Cy3-conjugated Goat anti-Rabbit IgG (H+L) (STJS001166) at 1:500 dilution.
Blue: DAPI for nuclear staining.



Immunofluorescence analysis of paraffin-embedded mouse eye using CRALBP Rabbit mAb (STJ11102467) at dilution of 1:100 (40x lens).
Secondary antibody: Cy3-conjugated Goat anti-Rabbit IgG (H+L) (STJS001166) at 1:500 dilution.
Blue: DAPI for nuclear staining.