

Anti-ANXA5 antibody (221-320) [S5MR] (STJ11102465)

GENERAL INFORMATION

Product Type	Primary antibodies
Applications	WB/ELISA
Host / Source	Rabbit
Reactivity	Human/Mouse/Rat

PRODUCT PROPERTIES

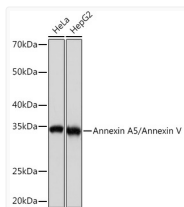
Clonality	Monoclonal
Concentration	Lot specific
Conjugation	Unconjugated
Purification	Affinity purification
Dilution Range	WB:1:500-1:2000 ELISA:Recommended starting concentration is 1 µg/mL. Please optimize the concentration based on your specific assay requirements.
Formulation	PBS with 0.02% Sodium Azide, 0.05% BSA, 50% Glycerol, pH 7.3.
Isotype	IgG
Molecular Weight	Protein Mw: 36kDa Observed Mw: 36kDa
Storage Instruction	Store at -20°C for up to 1 year from the date of receipt, and avoid repeat freeze-thaw cycles.

TARGET INFORMATION

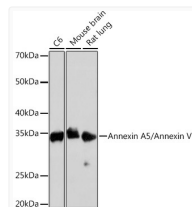
Gene ID	308
Gene Symbol	ANXA5
UniProt ID	ANXA5_HUMAN
Immunogen Region	221-320
Immunogen Sequence	IEETIDRETSGNLEQLLLV VKSIRSIPAYLAETLYYAMK GAGTDDHTLIRVMVSRSEID LFNIRKEFRKNFATSLYSMI KGDTSGDYKKALLLLCGEDD
Specificity	A synthetic peptide corresponding to a sequence within amino acids 221-320 of human Annexin A5/Annexin A5/Annexin V (NP_001145.1).

ADDITIONAL INFORMATION

Note **STRICTLY FOR FURTHER SCIENTIFIC RESEARCH USE ONLY (RUO). MUST NOT TO BE USED IN DIAGNOSTIC OR THERAPEUTIC APPLICATIONS.**



Western blot analysis of various lysates using Annexin A5/Annexin A5/Annexin V Rabbit mAb (STJ11102465) at 1:1000 dilution.
 Secondary antibody: HRP-conjugated Goat anti-Rabbit IgG (H+L) (STJS000856) at 1:10000 dilution.
 Lysates/proteins: 25 µg per lane.
 Blocking buffer: 3% nonfat dry milk in TBST.
 Detection: ECL Basic Kit
 Exposure time: 1s.



Western blot analysis of various lysates using Annexin A5/Annexin A5/Annexin V Rabbit mAb (STJ11102465) at 1:1000 dilution.
 Secondary antibody: HRP-conjugated Goat anti-Rabbit IgG (H+L) (STJS000856) at 1:10000 dilution.
 Lysates/proteins: 25 µg per lane.
 Blocking buffer: 3% nonfat dry milk in TBST.
 Detection: ECL Basic Kit
 Exposure time: 30s.