

Anti-SGCD antibody (190-289) [S6MR] (STJ11102446)

GENERAL INFORMATION

Product Type	Primary antibodies
Applications	WB/ELISA
Host / Source	Rabbit
Reactivity	Human/Mouse

PRODUCT PROPERTIES

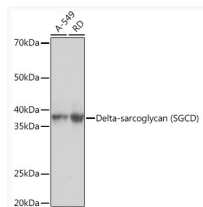
Clonality	Monoclonal
Concentration	Lot specific
Conjugation	Unconjugated
Purification	Affinity purification
Dilution Range	WB:1:500-1:2000 ELISA:Recommended starting concentration is 1 Mu g/mL. Please optimize the concentration based on your specific assay requirements.
Formulation	PBS with 0.02% Sodium Azide, 0.05% BSA, 50% Glycerol, pH 7.3.
Isotype	IgG
Molecular Weight	Protein Mw: 32kDa Observed Mw: 36kDa
Storage Instruction	Store at -20°C for up to 1 year from the date of receipt, and avoid repeat freeze-thaw cycles.

TARGET INFORMATION

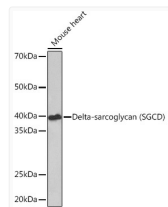
Gene ID	6444
Gene Symbol	SGCD
UniProt ID	SGCD_HUMAN
Immunogen Region	190-289
Immunogen Sequence	LRLESPTRSLVMEAPKGV E I NAEAGNMEATCRTELRL ESK DGEIKLDAAKIRL PRLPHGS YTPTGTRQKVFEICVCANGR LFLSQAGAGSTCQINTSVCL
Specificity	A synthetic peptide corresponding to a sequence within amino acids 190-289 of human Delta-sarcoglycan (SGCD) (Q92629).

ADDITIONAL INFORMATION

Note **STRICTLY FOR FURTHER SCIENTIFIC RESEARCH USE ONLY (RUO). MUST NOT TO BE USED IN DIAGNOSTIC OR THERAPEUTIC APPLICATIONS.**



Western blot analysis of various lysates using Delta-sarcoglycan (SGCD) Rabbit mAb (STJ11102446) at 1:1000 dilution.
 Secondary antibody: HRP-conjugated Goat anti-Rabbit IgG (H+L) (STJS000856) at 1:10000 dilution.
 Lysates/proteins: 25 Mu g per lane.
 Blocking buffer: 3% nonfat dry milk in TBST.
 Detection: ECL Basic Kit
 Exposure time: 3s.



Western blot analysis of lysates from Mouse heart, using Delta-sarcoglycan (SGCD) Rabbit mAb (STJ11102446) at 1:1000 dilution.
 Secondary antibody: HRP-conjugated Goat anti-Rabbit IgG (H+L) (STJS000856) at 1:10000 dilution.
 Lysates/proteins: 25 Mu g per lane.
 Blocking buffer: 3% nonfat dry milk in TBST.
 Detection: ECL Basic Kit
 Exposure time: 90s.