

## Anti-HMGB2 antibody (1-100) [S4MR] (STJ11102444)

### GENERAL INFORMATION

Product Type	Primary antibodies
Applications	WB/IHC-P/IF/ICC/IP/ELISA/ChIP/CUT&Tag
Host / Source	Rabbit
Reactivity	Human/Mouse/Rat

### PRODUCT PROPERTIES

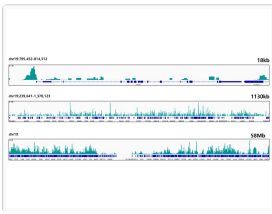
Clonality	Monoclonal
Concentration	Lot specific
Conjugation	Unconjugated
Purification	Affinity purification
Dilution Range	WB:1:1000-1:6000 IHC-P:1:200-1:2000 IF/ICC:1:100-1:1000 IP:0.5 Mu g-4 Mu g antibody for 200 Mu g-400 Mu g extracts of whole cells ELISA:Recommended starting concentration is 1 Mu g/mL. Please optimize the concentration based on your s
Formulation	PBS with 0.02% Sodium Azide, 0.05% BSA, 50% Glycerol, pH 7.3.
Isotype	IgG
Molecular Weight	Protein Mw: 24kDa Observed Mw: 24kDa
Storage Instruction	Store at-20°C for up to 1 year from the date of receipt, and avoid repeat freeze-thaw cycles.

### TARGET INFORMATION

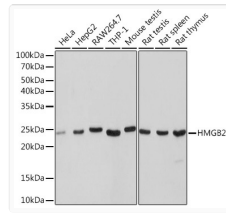
Gene ID	<a href="#">3148</a>
Gene Symbol	<a href="#">HMGB2</a>
UniProt ID	<a href="#">HMGB2_HUMAN</a>
Immunogen Region	1-100
Immunogen Sequence	MGKGDPNKPRGKMSSYAFFV QTCREEHKKKHPDSSVNF AE FSKKCSERWKTMSAKEKSKF EDMAKSDKARYDREMKNYVP PKGDKKGKKKDPNAPKRPPS
Specificity	A synthetic peptide corresponding to a sequence within amino acids 1-100 of human HMGB2 (P26583).

### ADDITIONAL INFORMATION

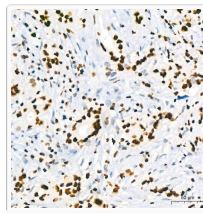
Note	STRICTLY FOR FURTHER SCIENTIFIC RESEARCH USE ONLY (RUO). MUST NOT TO BE USED IN DIAGNOSTIC OR THERAPEUTIC APPLICATIONS.
------	---



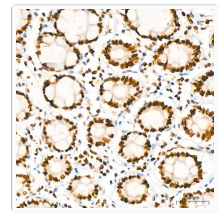
CUT&Tag was performed using the CUT&Tag Assay Kit (pAG-Tn5) for Illumina (RK20265) from  $10^6$  K562 cells with 1  $\mu$ g HMGB2 Rabbit mAb (STJ11102444), along with a Goat Anti-Rabbit IgG (H+L) (STJS000856) at 1:10000 dilution. The CUT&Tag results indicate the enrichment pattern of HMGB2 in representative gene loci (PTBP1), as shown in figure.



Western blot analysis of various lysates using HMGB2 Rabbit mAb (STJ11102444) at 1:1000 dilution. Secondary antibody: HRP-conjugated Goat anti-Rabbit IgG (H+L) (STJS000856) at 1:10000 dilution. Lysates/proteins: 25  $\mu$ g per lane. Blocking buffer: 3% nonfat dry milk in TBST. Detection: ECL Basic Kit. Exposure time: 1s.



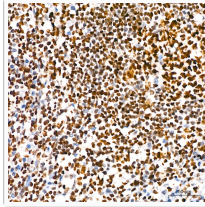
Immunohistochemistry analysis of paraffin-embedded Human breast cancer using HMGB2 Rabbit mAb (STJ11102444) at dilution of 1:200 (40x lens). High pressure antigen retrieval performed with 0.01M Tris/EDTA Buffer (pH 9.0) prior to immunohistochemistry staining.



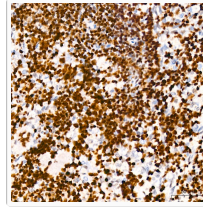
Immunohistochemistry analysis of paraffin-embedded Human colon using HMGB2 Rabbit mAb (STJ11102444) at dilution of 1:200 (40x lens). High pressure antigen retrieval performed with 0.01M Tris/EDTA Buffer (pH 9.0) prior to immunohistochemistry staining.



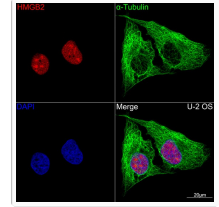
Immunohistochemistry analysis of paraffin-embedded Human thyroid cancer using HMGB2 Rabbit mAb (STJ11102444) at dilution of 1:200 (40x lens). High pressure antigen retrieval performed with 0.01M Tris/EDTA Buffer (pH 9.0) prior to immunohistochemistry staining.



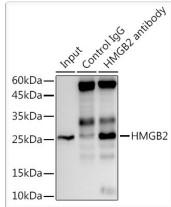
Immunohistochemistry analysis of paraffin-embedded Human tonsil using HMGB2 Rabbit mAb (STJ11102444) at dilution of 1:200 (40x lens). High pressure antigen retrieval performed with 0.01M Tris/EDTA Buffer (pH 9.0) prior to immunohistochemistry staining.



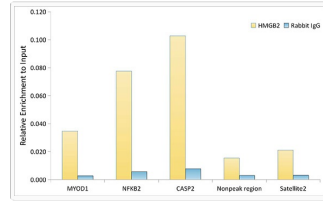
Immunohistochemistry analysis of paraffin-embedded Rat spleen using HMGB2 Rabbit mAb (STJ11102444) at dilution of 1:200 (40x lens). High pressure antigen retrieval performed with 0.01M Tris/EDTA Buffer (pH 9.0) prior to immunohistochemistry staining.



Confocal imaging of U-2 OS cells using HMGB2 Rabbit mAb (STJ11102444, dilution 1:100) (Red), The cells were counterstained with Alpha-Tubulin Mouse mAb (STJ11107556, dilution 1:400) (Green). DAPI was used for nuclear staining (blue). Objective: 100x.



Immunoprecipitation analysis of 300  $\mu$ g extracts from Mouse testis using 3  $\mu$ g HMGB2 antibody (STJ11102444). Western blot was performed from the immunoprecipitate using HMGB2 (STJ11102444) at a dilution of 1:1000.



Chromatin immunoprecipitation analysis of extracts from HepG2 cells, using HMGB2 antibody (STJ11102444) and rabbit IgG. The amount of immunoprecipitated DNA was checked by quantitative PCR. Histogram was constructed by the ratios of the immunoprecipitated DNA to the input.