

Anti-PHB2 antibody (100-200) [S6MR] (STJ11102436)

GENERAL INFORMATION

Product Type	Primary antibodies
Applications	WB/IHC-P/IF/ICC/IP/ELISA
Host / Source	Rabbit
Reactivity	Human/Mouse/Rat

PRODUCT PROPERTIES

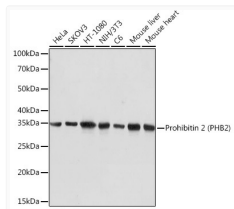
Clonality	Monoclonal
Concentration	Lot specific
Conjugation	Unconjugated
Purification	Affinity purification
Dilution Range	WB:1:5000-1:30000 IHC-P:1:100-1:1000 IF/CC:1:50-1:200 IP:0.5 Mu g-4 Mu g antibody for 200 Mu g-400 Mu g extracts of whole cells ELISA:Recommended starting concentration is 1 Mu g/mL. Please optimize the concentration based on your sp
Formulation	PBS with 0.02% Sodium Azide, 0.05% BSA, 50% Glycerol, pH 7.3.
Isotype	IgG
Molecular Weight	Protein Mw: 33kDa Observed Mw: 33kDa
Storage Instruction	Store at -20°C for up to 1 year from the date of receipt, and avoid repeat freeze-thaw cycles.

TARGET INFORMATION

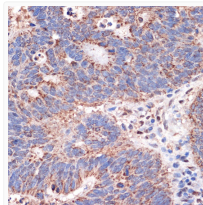
Gene ID	11331
Gene Symbol	PHB2
UniProt ID	PHB2_HUMAN
Immunogen Region	100-200
Immunogen Sequence	QMVNISLRVLSRPNAQELPS MYQRLGLDYEERVLPSIVNE VLKSVVAKFNASQLITQRAQ VSLLRRELTERAKDFSLIL DDVAITELSFSSREYTA AVEA K
Specificity	A synthetic peptide corresponding to a sequence within amino acids 100-200 of human Prohibitin 2 (Prohibitin 2 (PHB2)) (Q99623).

ADDITIONAL INFORMATION

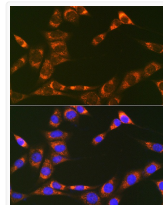
Note **STRICTLY FOR FURTHER SCIENTIFIC RESEARCH USE ONLY (RUO). MUST NOT TO BE USED IN DIAGNOSTIC OR THERAPEUTIC APPLICATIONS.**



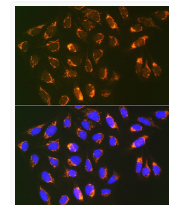
Western blot analysis of various lysates using Prohibitin 2 (Prohibitin 2 (PHB2)) Rabbit mAb (STJ11102436) at 1:5000 dilution. Secondary antibody: HRP-conjugated Goat anti-Rabbit IgG (H+L) (STJS000856) at 1:10000 dilution. Lysates/proteins: 25 Mu g per lane. Blocking buffer: 3% nonfat dry milk in TBST. Detection: ECL Basic Kit. Exposure time: 1s.



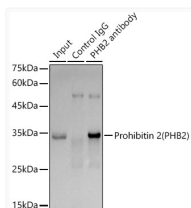
Immunohistochemistry analysis of paraffin-embedded Human colon carcinoma using Prohibitin 2 (Prohibitin 2 (PHB2)) Rabbit mAb (STJ11102436) at dilution of 1:100 (40x lens). Microwave antigen retrieval performed with 0.01M PBS Buffer (pH 7.2) prior to immunohistochemistry staining.



Confocal imaging of NIH/3T3 cells using Prohibitin 2 (PHB2) Rabbit mAb (STJ11102436, dilution 1:200) followed by a further incubation with Cy3 Goat Anti-Rabbit IgG (H+L) (STJS001166, dilution 1:500) (Red). The cells were counterstained with Alpha-Tubulin Mouse mAb (STJ11107556, dilution 1:400) followed by incubation with ABflo® 488-conjugated Goat Anti-Mouse IgG (H+L) antibody (STJS001209, dilution 1:500) (Green). DAPI was used for nuclear staining (Blue). Objective: 100x.



Confocal imaging of U-2 OS cells using Prohibitin 2 (PHB2) Rabbit mAb (STJ11102436, dilution 1:200) followed by a further incubation with Cy3 Goat Anti-Rabbit IgG (H+L) (STJS001166, dilution 1:500) (Red). The cells were counterstained with Alpha-Tubulin Mouse mAb (STJ11107556, dilution 1:400) followed by incubation with ABflo® 488-conjugated Goat Anti-Mouse IgG (H+L) antibody (STJS001209, dilution 1:500) (Green). DAPI was used for nuclear staining (Blue). Objective: 100x.



Immunoprecipitation analysis of 300 Mu g extracts of SKOV3 cells using 3 Mu g Prohibitin 2 (PHB2) antibody (STJ11102436). Western blot was performed from the immunoprecipitate using Prohibitin 2 (PHB2) antibody (STJ11102436) at a dilution of 1:1000.