

Anti-LGR6 antibody (801-900) [S9MR] (STJ11102429)

GENERAL INFORMATION

| | |
|---------------|--------------------|
| Product Type | Primary antibodies |
| Applications | WB/IF/ICC/ELISA |
| Host / Source | Rabbit |
| Reactivity | Human/Rat |

PRODUCT PROPERTIES

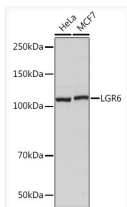
| | |
|---------------------|--|
| Clonality | Monoclonal |
| Concentration | Lot specific |
| Conjugation | Unconjugated |
| Purification | Affinity purification |
| Dilution Range | WB:1:500-1:2000 IF/CC:1:50-1:200 ELISA:Recommended starting concentration is 1 Mu g/mL. Please optimize the concentration based on your specific assay requirements. |
| Formulation | PBS with 0.02% Sodium Azide, 0.05% BSA, 50% Glycerol, pH 7.3. |
| Isotype | IgG |
| Molecular Weight | Protein Mw: 104kDa Observed Mw: 104kDa |
| Storage Instruction | Store at -20°C for up to 1 year from the date of receipt, and avoid repeat freeze-thaw cycles. |

TARGET INFORMATION

| | |
|--------------------|---|
| Gene ID | 59352 |
| Gene Symbol | LGR6 |
| UniProt ID | LGR6_HUMAN |
| Immunogen Region | 801-900 |
| Immunogen Sequence | FPVTPEAVKSVLLVVLPLPA CLNPLLYLLFNPHFRDDLRR LRPRAGDSGPLAYAAAGELE KSSCDSTQALVAFSDVDLIL EASEAGRPPGLETYGFPSVT |
| Specificity | A synthetic peptide corresponding to a sequence within amino acids 801-900 of human LGR6 (Q9HBX8). |

ADDITIONAL INFORMATION

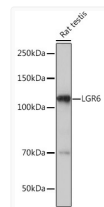
Note **STRICTLY FOR FURTHER SCIENTIFIC RESEARCH USE ONLY (RUO). MUST NOT TO BE USED IN DIAGNOSTIC OR THERAPEUTIC APPLICATIONS.**



Western blot analysis of various lysates using LGR6 Rabbit mAb (STJ11102429) at 1:1000 dilution.

Secondary antibody: HRP-conjugated Goat anti-Rabbit IgG (H+L) (STJS000856) at 1:10000 dilution.

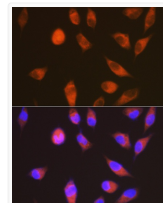
Lysates/proteins: 25 Mu g per lane.
Blocking buffer: 3% nonfat dry milk in TBST.
Detection: ECL Basic Kit
Exposure time: 3s.



Western blot analysis of lysates from Rat testis, using LGR6 Rabbit mAb (STJ11102429) at 1:1000 dilution.

Secondary antibody: HRP-conjugated Goat anti-Rabbit IgG (H+L) (STJS000856) at 1:10000 dilution.

Lysates/proteins: 25 Mu g per lane.
Blocking buffer: 3% nonfat dry milk in TBST.
Detection: ECL Basic Kit
Exposure time: 30s.



Immunofluorescence analysis of HeLa cells using LGR6 Rabbit mAb (STJ11102429) at dilution of 1:100 (40x lens). Secondary antibody: Cy3-conjugated Goat anti-Rabbit IgG (H+L) (STJS001166) at 1:500 dilution. Blue: DAPI for nuclear staining.