

## Anti-ALDH1A2 antibody (1-100) [S6MR] (STJ11102426)

### GENERAL INFORMATION

|               |                    |
|---------------|--------------------|
| Product Type  | Primary antibodies |
| Applications  | WB/IHC-P/ELISA     |
| Host / Source | Rabbit             |
| Reactivity    | Human/Mouse/Rat    |

### PRODUCT PROPERTIES

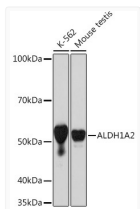
|                     |  |
|---------------------|--|
| Clonality           | Monoclonal   |
| Concentration       | Lot specific   |
| Conjugation         | Unconjugated   |
| Purification        | Affinity purification  |
| Dilution Range      | WB:1:500-1:2000<br>IHC-P:1:50-1:200<br>ELISA:Recommended starting concentration is 1 µg/mL. Please optimize the concentration based on your specific assay requirements. |
| Formulation         | PBS with 0.02% Sodium Azide, 0.05% BSA, 50% Glycerol, pH 7.3.  |
| Isotype             | IgG  |
| Molecular Weight    | Protein Mw: 57kDa<br>Observed Mw: 57kDa  |
| Storage Instruction | Store at -20°C for up to 1 year from the date of receipt, and avoid repeat freeze-thaw cycles.   |

### TARGET INFORMATION

|                    |   |
|--------------------|---|
| Gene ID            | <a href="#">8854</a>  |
| Gene Symbol        | <a href="#">ALDH1A2</a>   |
| UniProt ID         | <a href="#">AL1A2_HUMAN</a>   |
| Immunogen Region   | 1-100   |
| Immunogen Sequence | MTSSKIEMPGEVKADPAALM ASLHLLPSPTPNLEIKYTKI FINNEWQNSSEGRVFPVYNP<br>ATGEQVCEVQEADKADIDKA VQAARLAFSLGSVWRRMDAS |
| Specificity        | A synthetic peptide corresponding to a sequence within amino acids 1-100 of human ALDH1A2 (NP_003879.2).    |

### ADDITIONAL INFORMATION

Note **STRICTLY FOR FURTHER SCIENTIFIC RESEARCH USE ONLY (RUO). MUST NOT TO BE USED IN DIAGNOSTIC OR THERAPEUTIC APPLICATIONS.**

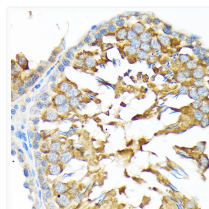


Western blot analysis of various lysates using ALDH1A2 Rabbit mAb (STJ11102426) at 1:1000 dilution.

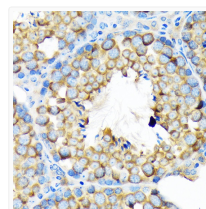
Secondary antibody: HRP-conjugated Goat anti-Rabbit IgG (H+L) (STJS000856) at 1:10000 dilution.

Lysates/proteins: 25 µg per lane.  
Blocking buffer: 3% nonfat dry milk in TBST.

Detection: ECL Basic Kit  
Exposure time: 30s.



Immunohistochemistry analysis of paraffin-embedded Rat testis using ALDH1A2 Rabbit mAb (STJ11102426) at dilution of 1:100 (40x lens).  
Microwave antigen retrieval performed with 0.01M Tris/EDTA Buffer (pH 9.0) prior to immunohistochemistry staining.



Immunohistochemistry analysis of paraffin-embedded Mouse testis using ALDH1A2 Rabbit mAb (STJ11102426) at dilution of 1:100 (40x lens).  
Microwave antigen retrieval performed with 0.01M Tris/EDTA Buffer (pH 9.0) prior to immunohistochemistry staining.