

## Anti-MSI1 antibody (1-100) [S5MR] (STJ11102425)

### GENERAL INFORMATION

Product Type	Primary antibodies
Applications	WB/IF/ICC/ELISA
Host / Source	Rabbit
Reactivity	Human/Mouse

### PRODUCT PROPERTIES

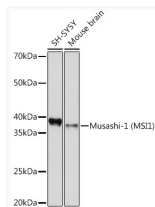
Clonality	Monoclonal
Concentration	Lot specific
Conjugation	Unconjugated
Purification	Affinity purification
Dilution Range	WB:1:500-1:2000 IF/CC:1:50-1:200 ELISA:Recommended starting concentration is 1 µg/mL. Please optimize the concentration based on your specific assay requirements.
Formulation	PBS with 0.02% Sodium Azide, 0.05% BSA, 50% Glycerol, pH 7.3.
Isotype	IgG
Molecular Weight	Protein Mw: 39kDa Observed Mw: 39kDa
Storage Instruction	Store at -20°C for up to 1 year from the date of receipt, and avoid repeat freeze-thaw cycles.

### TARGET INFORMATION

Gene ID	<a href="#">4440</a>
Gene Symbol	<a href="#">MSI1</a>
UniProt ID	<a href="#">MSI1H_HUMAN</a>
Immunogen Region	1-100
Immunogen Sequence	METDAPQPGLASPDSPHDPC KMFIFGLSWQTTQEGLREYF GQFGEVKECLVMDPLTKRS RGFGFVTFMDQAGVDKVLQA SRHELDSKTIDPKVAFPRRA
Specificity	A synthetic peptide corresponding to a sequence within amino acids 1-100 of human MSI1 (O43347).

### ADDITIONAL INFORMATION

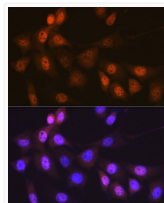
Note STRICTLY FOR FURTHER SCIENTIFIC RESEARCH USE ONLY (RUO). MUST NOT TO BE USED IN DIAGNOSTIC OR THERAPEUTIC APPLICATIONS.



Western blot analysis of various lysates using Musashi-1 (MSI1) Rabbit mAb (STJ11102425) at 1:1000 dilution.

Secondary antibody: HRP-conjugated Goat anti-Rabbit IgG (H+L) (STJS000856) at 1:10000 dilution.

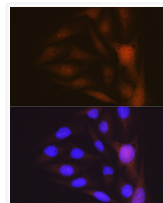
Lysates/proteins: 25 µg per lane.  
Blocking buffer: 3% nonfat dry milk in TBST.  
Detection: ECL Basic Kit  
Exposure time: 3min.



Immunofluorescence analysis of NIH-3T3 cells using Musashi-1 (MSI1) Rabbit mAb (STJ11102425) at dilution of 1:100 (40x lens).

Secondary antibody: Cy3-conjugated Goat anti-Rabbit IgG (H+L) (STJS001166) at 1:500 dilution.

Blue: DAPI for nuclear staining.



Immunofluorescence analysis of U-2 OS cells using Musashi-1 (MSI1) Rabbit mAb (STJ11102425) at dilution of 1:100 (40x lens).

Secondary antibody: Cy3-conjugated Goat anti-Rabbit IgG (H+L) (STJS001166) at 1:500 dilution.

Blue: DAPI for nuclear staining.