

Anti-HSPB6 antibody (70-150) [S2MR] (STJ11102422)

GENERAL INFORMATION

Product Type	Primary antibodies
Applications	WB/IHC-P/IF/ICC/ELISA
Host / Source	Rabbit
Reactivity	Human/Mouse/Rat

PRODUCT PROPERTIES

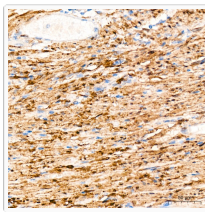
Clonality	Monoclonal
Concentration	Lot specific
Conjugation	Unconjugated
Purification	Affinity purification
Dilution Range	WB:1:500-1:1000 IHC-P:1:50-1:200 IF/CC:1:50-1:200 ELISA:Recommended starting concentration is 1 µg/mL. Please optimize the concentration based on your specific assay requirements.
Formulation	PBS with 0.02% Sodium Azide, 0.05% BSA, 50% Glycerol, pH 7.3.
Isotype	IgG
Molecular Weight	Protein Mw: 17kDa Observed Mw: 17kDa
Storage Instruction	Store at -20°C for up to 1 year from the date of receipt, and avoid repeat freeze-thaw cycles.

TARGET INFORMATION

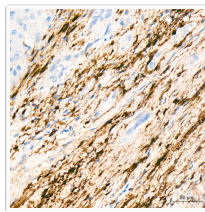
Gene ID	126393
Gene Symbol	HSPB6
UniProt ID	HSPB6_HUMAN
Immunogen Region	70-150
Immunogen Sequence	DPGHFSVLLDVKHFSPEEIA VKVVGHEVHARHEERPDE HGFVAREFHRRYRLPPGVDP AAVTSALSPEGVLSIQAAPA S
Specificity	A synthetic peptide corresponding to a sequence within amino acids 70-150 of human HSP20/HSPB6 (O14558).

ADDITIONAL INFORMATION

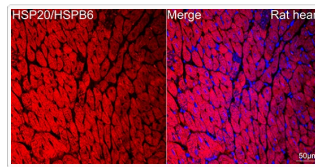
Note	STRICTLY FOR FURTHER SCIENTIFIC RESEARCH USE ONLY (RUO). MUST NOT TO BE USED IN DIAGNOSTIC OR THERAPEUTIC APPLICATIONS.
------	---



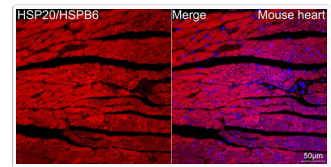
Western blot analysis of various lysates using HSP20/HSPB6 Rabbit mAb (STJ11102422) at 1:1000 dilution. Secondary antibody: HRP-conjugated Goat anti-Rabbit IgG (H+L) (STJS000856) at 1:10000 dilution. Lysates/proteins: 25 Mu g per lane. Blocking buffer: 3% nonfat dry milk in TBST. Detection: ECL Basic Kit Exposure time: 1s.



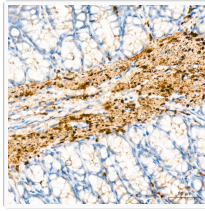
Immunohistochemistry analysis of paraffin-embedded Mouse heart tissue using HSP20/HSPB6 Rabbit mAb (STJ11102422) at a dilution of 1:200 (40x lens). High pressure antigen retrieval was performed with 0.01 M Tris-EDTA buffer (pH 9.0) prior to immunohistochemistry staining.



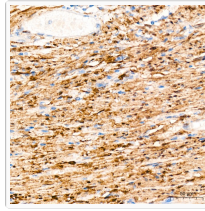
Immunohistochemistry analysis of paraffin-embedded Human colon carcinoma tissue using HSP20/HSPB6 Rabbit mAb (STJ11102422) at a dilution of 1:200 (40x lens). High pressure antigen retrieval was performed with 0.01 M Tris-EDTA buffer (pH 9.0) prior to immunohistochemistry staining.



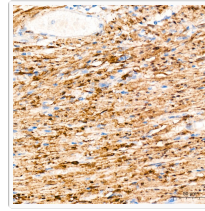
Immunohistochemistry analysis of paraffin-embedded Human liver cancer tissue using HSP20/HSPB6 Rabbit mAb (STJ11102422) at a dilution of 1:200 (40x lens). High pressure antigen retrieval was performed with 0.01 M Tris-EDTA buffer (pH 9.0) prior to immunohistochemistry staining.



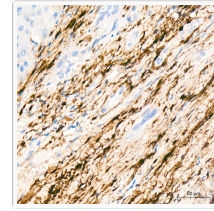
Immunohistochemistry analysis of paraffin-embedded Rat colon tissue using HSP20/HSPB6 Rabbit mAb (STJ11102422) at a dilution of 1:200 (40x lens). High pressure antigen retrieval was performed with 0.01 M Tris-EDTA buffer (pH 9.0) prior to immunohistochemistry staining.



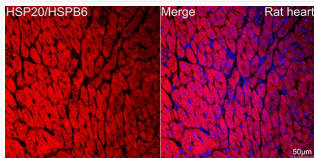
Western blot analysis of various lysates using HSP20/HSPB6 Rabbit mAb (STJ11102422) at 1:1000 dilution. Secondary antibody: HRP Goat Anti-Rabbit IgG (H+L) (STJS000856) at 1:10000 dilution. Lysates/proteins: 25 Mu g per lane. Blocking buffer: 3% nonfat dry milk in TBST. Detection: ECL Basic Kit Exposure time: 1s.



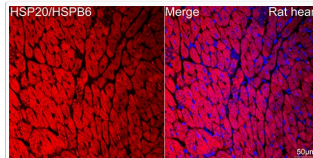
Immunohistochemistry analysis of HSP20/HSPB6 in paraffin-embedded human colon carcinoma tissue using HSP20/HSPB6 Rabbit mAb (STJ11102422) at a dilution of 1:200 (40x lens). High pressure antigen retrieval was performed with 0.01 M Tris-EDTA buffer (pH 9.0) prior to immunohistochemistry staining.



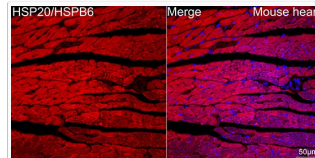
Immunohistochemistry analysis of HSP20/HSPB6 in paraffin-embedded human liver cancer tissue using HSP20/HSPB6 Rabbit mAb (STJ11102422) at a dilution of 1:200 (40x lens). High pressure antigen retrieval was performed with 0.01 M Tris-EDTA buffer (pH 9.0) prior to immunohistochemistry staining.



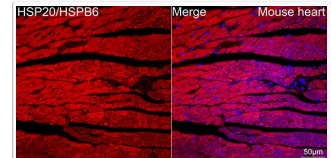
Immunohistochemistry analysis of HSP20/HSPB6 in paraffin-embedded rat heart tissue using HSP20/HSPB6 Rabbit mAb (STJ11102422) at a dilution of 1:200 (40x lens). High pressure antigen retrieval was performed with 0.01 M Tris-EDTA buffer (pH 9.0) prior to immunohistochemistry staining.



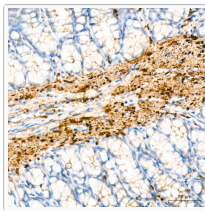
Confocal imaging of paraffin-embedded Rat heart tissue using HSP20/HSPB6 Rabbit mAb (STJ11102422, dilution 1:200) followed by a further incubation with Cy3 Goat Anti-Rabbit IgG (H+L) (STJS001166, dilution 1:500) (Red). DAPI was used for nuclear staining (Blue). Objective: 40x. Perform high pressure antigen retrieval with 0.01 M citrate buffer (pH 6.0) prior to IF staining.



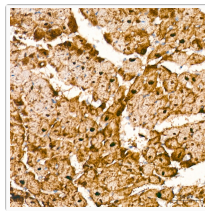
Immunohistochemistry analysis of HSP20/HSPB6 in paraffin-embedded mouse heart tissue using HSP20/HSPB6 Rabbit mAb (STJ11102422) at a dilution of 1:200 (40x lens). High pressure antigen retrieval was performed with 0.01 M Tris-EDTA buffer (pH 9.0) prior to immunohistochemistry staining.



Confocal imaging of paraffin-embedded Mouse heart tissue using HSP20/HSPB6 Rabbit mAb (STJ11102422, dilution 1:200) followed by a further incubation with Cy3 Goat Anti-Rabbit IgG (H+L) (STJS001166, dilution 1:500) (Red). DAPI was used for nuclear staining (Blue). Objective: 40x. Perform high pressure antigen retrieval with 0.01 M citrate buffer (pH 6.0) prior to IF staining.



Immunohistochemistry analysis of HSP20/HSPB6 in paraffin-embedded rat colon tissue using HSP20/HSPB6 Rabbit mAb (STJ11102422) at a dilution of 1:200 (40x lens). High pressure antigen retrieval was performed with 0.01 M Tris-EDTA buffer (pH 9.0) prior to immunohistochemistry staining.



Immunohistochemistry analysis of HSP20/HSPB6 in paraffin-embedded rat heart tissue using HSP20/HSPB6 Rabbit mAb (STJ11102422) at a dilution of 1:200 (40x lens). High pressure antigen retrieval was performed with 0.01 M Tris-EDTA buffer (pH 9.0) prior to immunohistochemistry staining.