

## Anti-SUMO4 antibody (1-95) [S8MR] (STJ11102408)

### GENERAL INFORMATION

Product Type	Primary antibodies
Applications	WB/IHC-P/IF/ICC/ELISA
Host / Source	Rabbit
Reactivity	Human/Mouse/Rat

### PRODUCT PROPERTIES

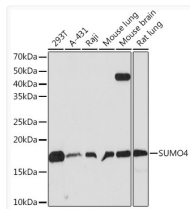
Clonality	Monoclonal
Concentration	Lot specific
Conjugation	Unconjugated
Purification	Affinity purification
Dilution Range	WB:1:500-1:1000 IHC-P:1:50-1:200 IF/CC:1:50-1:200 ELISA:Recommended starting concentration is 1 Mu g/mL. Please optimize the concentration based on your specific assay requirements.
Formulation	PBS with 0.02% Sodium Azide, 0.05% BSA, 50% Glycerol, pH 7.3.
Isotype	IgG
Molecular Weight	Protein Mw: 11kDa Observed Mw: 17kDa
Storage Instruction	Store at -20°C for up to 1 year from the date of receipt, and avoid repeat freeze-thaw cycles.

### TARGET INFORMATION

Gene ID	<a href="#">387082</a>
Gene Symbol	<a href="#">SUMO4</a>
UniProt ID	<a href="#">SUMO4_HUMAN</a>
Immunogen Region	1-95
Immunogen Sequence	MANEKPTEEVKTENNHNHNL KVAGQDGSVVQFKIKRQTPL SKLMKAYCEPRGLSVKQIRF RFGGQPISGTDKPAQLEMED EDTIDVFQQPTGGVY
Specificity	Recombinant fusion protein containing a sequence corresponding to amino acids 1-95 of human SUMO4 (Q6EEV6).

### ADDITIONAL INFORMATION

Note **STRICTLY FOR FURTHER SCIENTIFIC RESEARCH USE ONLY (RUO). MUST NOT TO BE USED IN DIAGNOSTIC OR THERAPEUTIC APPLICATIONS.**



Western blot analysis of various lysates using SUMO4 Rabbit mAb (STJ11102408) at 1:500 dilution.

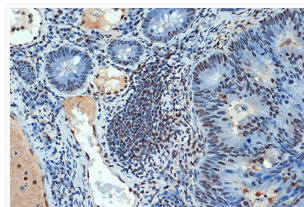
Secondary antibody: HRP-conjugated Goat anti-Rabbit IgG (H+L) (STJS000856) at 1:10000 dilution.

Lysates/proteins: 25 Mu g per lane.

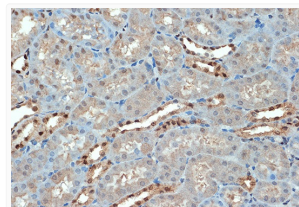
Blocking buffer: 3% nonfat dry milk in TBST.

Detection: ECL Basic Kit

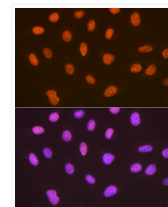
Exposure time: 30s.



Immunohistochemistry analysis of paraffin-embedded Human colon carcinoma using SUMO4 Rabbit mAb (STJ11102408) at dilution of 1:100 (40x lens). Microwave antigen retrieval performed with 0.01M Tris/EDTA Buffer (pH 9.0) prior to immunohistochemistry staining.



Immunohistochemistry analysis of paraffin-embedded Mouse kidney using SUMO4 Rabbit mAb (STJ11102408) at dilution of 1:100 (40x lens). Microwave antigen retrieval performed with 0.01M Tris/EDTA Buffer (pH 9.0) prior to immunohistochemistry staining.



Immunofluorescence analysis of U-2 OS cells using SUMO4 Rabbit mAb (STJ11102408) at dilution of 1:100 (40x lens). Secondary antibody: Cy3-conjugated Goat anti-Rabbit IgG (H+L) (STJS001166) at 1:500 dilution. Blue: DAPI for nuclear staining.