

## Anti-FEN1 antibody (250-350) [S6MR] (STJ11102406)

### GENERAL INFORMATION

Product Type	Primary antibodies
Applications	WB/IHC-P/ELISA
Host / Source	Rabbit
Reactivity	Human/Mouse

### PRODUCT PROPERTIES

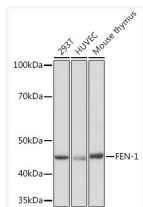
Clonality	Monoclonal
Concentration	Lot specific
Conjugation	Unconjugated
Purification	Affinity purification
Dilution Range	WB:1:500-1:2000 IHC-P:1:50-1:200 ELISA:Recommended starting concentration is 1 Mu g/mL. Please optimize the concentration based on your specific assay requirements.
Formulation	PBS with 0.02% Sodium Azide, 0.05% BSA, 50% Glycerol, pH 7.3.
Isotype	IgG
Molecular Weight	Protein Mw: 43kDa Observed Mw: 45kDa
Storage Instruction	Store at -20°C for up to 1 year from the date of receipt, and avoid repeat freeze-thaw cycles.

### TARGET INFORMATION

Gene ID	<a href="#">2237</a>
Gene Symbol	<a href="#">FEN1</a>
UniProt ID	<a href="#">FEN1_HUMAN</a>
Immunogen Region	250-350
Immunogen Sequence	IQKHKSIEEIVRRDPNKYP VPENWLHKEAHQLFLEPEVL DPESVELKWSEPNEEELIKF MCGEKQFSEERIRSGVKRLS KSRQGSTQGRLLDFFKVTGS L
Specificity	A synthetic peptide corresponding to a sequence within amino acids 250-350 of human FEN-1 (P39748).

### ADDITIONAL INFORMATION

Note STRICTLY FOR FURTHER SCIENTIFIC RESEARCH USE ONLY (RUO). MUST NOT TO BE USED IN DIAGNOSTIC OR THERAPEUTIC APPLICATIONS.

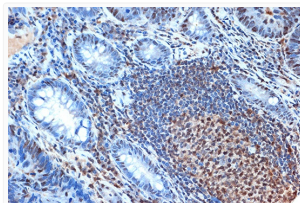


Western blot analysis of various lysates using FEN-1 Rabbit mAb (STJ11102406) at 1:1000 dilution.

Secondary antibody: HRP-conjugated Goat anti-Rabbit IgG (H+L) (STJS000856) at 1:10000 dilution.

Lysates/proteins: 25 Mu g per lane.  
Blocking buffer: 3% nonfat dry milk in TBST.

Detection: ECL Basic Kit  
Exposure time: 1s.



Immunohistochemistry analysis of paraffin-embedded Human colon carcinoma using FEN-1 Rabbit mAb (STJ11102406) at dilution of 1:100 (40x lens). Microwave antigen retrieval performed with 0.01M Tris/EDTA Buffer (pH 9.0) prior to immunohistochemistry staining.