

## Anti-CXCR5 antibody (273-372) [S1MR] (STJ11102401)

### GENERAL INFORMATION

Product Type	Primary antibodies
Applications	WB/IF/ICC/ELISA
Host / Source	Rabbit
Reactivity	Human/Mouse/Rat

### PRODUCT PROPERTIES

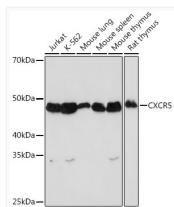
Clonality	Monoclonal
Concentration	Lot specific
Conjugation	Unconjugated
Purification	Affinity purification
Dilution Range	WB:1:1000-1:2000 IF/CC:1:100-1:1000 ELISA:Recommended starting concentration is 1 µg/mL. Please optimize the concentration based on your specific assay requirements.
Formulation	PBS with 0.02% Sodium Azide, 0.05% BSA, 50% Glycerol, pH 7.3.
Isotype	IgG
Molecular Weight	Protein Mw: 42kDa Observed Mw: 45kDa
Storage Instruction	Store at -20°C for up to 1 year from the date of receipt, and avoid repeat freeze-thaw cycles.

### TARGET INFORMATION

Gene ID	<a href="#">643</a>
Gene Symbol	<a href="#">CXCR5</a>
UniProt ID	<a href="#">CXCR5_HUMAN</a>
Immunogen Region	273-372
Immunogen Sequence	SPYHIVIFLDLTLARLKAVDN TCKLNGSLPVAITMCEFLGL AHCLNPMPLYTFAGVKFRSD LSRLLTKLGCTGPASLCQLF PSWRRSSLSESENATSLTTF
Specificity	A synthetic peptide corresponding to a sequence within amino acids 273-372 of human CXCR5 (P32302).

### ADDITIONAL INFORMATION

Note **STRICTLY FOR FURTHER SCIENTIFIC RESEARCH USE ONLY (RUO). MUST NOT TO BE USED IN DIAGNOSTIC OR THERAPEUTIC APPLICATIONS.**

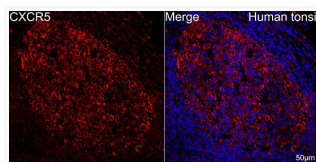


Western blot analysis of various lysates using CXCR5 Rabbit mAb (STJ11102401) at 1:1000 dilution.

Secondary antibody: HRP-conjugated Goat anti-Rabbit IgG (H+L) (STJS000856) at 1:10000 dilution.

Lysates/proteins: 25 µg per lane.  
Blocking buffer: 3% nonfat dry milk in TBST.

Detection: ECL Basic Kit  
Exposure time: 90s.



Confocal imaging of human tonsil using CXCR5 Rabbit mAb (STJ11102401, dilution 1:100) (Red). DAPI was used for nuclear staining (blue). Objective: 40x. Perform high pressure antigen retrieval with 10 mM citrate buffer pH 6.0 before commencing with IF staining protocol.