

Anti-CST3 antibody (1-146) [S8MR] (STJ11102398)

GENERAL INFORMATION

Product Type	Primary antibodies
Applications	WB/ELISA
Host / Source	Rabbit
Reactivity	Human/Mouse

PRODUCT PROPERTIES

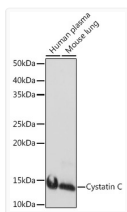
Clonality	Monoclonal
Concentration	Lot specific
Conjugation	Unconjugated
Purification	Affinity purification
Dilution Range	WB:1:500-1:1000 ELISA:Recommended starting concentration is 1 Mu g/mL. Please optimize the concentration based on your specific assay requirements.
Formulation	PBS with 0.02% Sodium Azide, 0.05% BSA, 50% Glycerol, pH 7.3.
Isotype	IgG
Molecular Weight	Protein Mw: 13kDa Observed Mw: 15kDa
Storage Instruction	Store at -20°C for up to 1 year from the date of receipt, and avoid repeat freeze-thaw cycles.

TARGET INFORMATION

Gene ID	1471
Gene Symbol	CST3
UniProt ID	CYTC_HUMAN
Immunogen Region	1-146
Immunogen Sequence	MAGPLRAPLLLLLAILAVALA VSPAAGSSPGKPPRLVGGPM DASVEEEGVRRALDFAVGEY NKASNDMYHSRALQVVRARK QIVAGVNYFLDVELGRITCT KTQPNLDNCPFHDQPHLKRK AFCFSFIYAVPWQGTMTLSK STCQDA
Specificity	Recombinant fusion protein containing a sequence corresponding to amino acids 1-146 of human Cystatin C (P01034).

ADDITIONAL INFORMATION

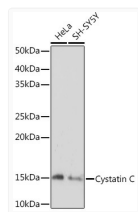
Note STRICTLY FOR FURTHER SCIENTIFIC RESEARCH USE ONLY (RUO). MUST NOT TO BE USED IN DIAGNOSTIC OR THERAPEUTIC APPLICATIONS.



Western blot analysis of various lysates using Cystatin C Rabbit mAb (STJ11102398) at 1:1000 dilution.

Secondary antibody: HRP-conjugated Goat anti-Rabbit IgG (H+L) (STJS000856) at 1:10000 dilution.

Lysates/proteins: 25 Mu g per lane.
Blocking buffer: 3% nonfat dry milk in TBST.
Detection: ECL Basic Kit
Exposure time: 1s.



Western blot analysis of various lysates using Cystatin C Rabbit mAb (STJ11102398) at 1:1000 dilution.

Secondary antibody: HRP-conjugated Goat anti-Rabbit IgG (H+L) (STJS000856) at 1:10000 dilution.

Lysates/proteins: 25 Mu g per lane.
Blocking buffer: 3% nonfat dry milk in TBST.
Detection: ECL Basic Kit
Exposure time: 10s.