

Anti-TXNRD2 antibody (1-100) [S9MR] (STJ11102389)

GENERAL INFORMATION

Product Type	Primary antibodies
Applications	WB/ELISA
Host / Source	Rabbit
Reactivity	Human/Mouse/Rat

PRODUCT PROPERTIES

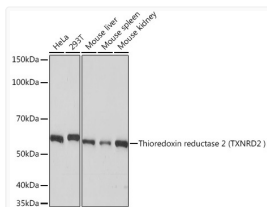
Clonality	Monoclonal
Concentration	Lot specific
Conjugation	Unconjugated
Purification	Affinity purification
Dilution Range	WB:1:500-1:2000 ELISA:Recommended starting concentration is 1 Mu g/mL. Please optimize the concentration based on your specific assay requirements.
Formulation	PBS with 0.02% Sodium Azide, 0.05% BSA, 50% Glycerol, pH 7.3.
Isotype	IgG
Molecular Weight	Protein Mw: 57kDa Observed Mw: 57kDa
Storage Instruction	Store at -20°C for up to 1 year from the date of receipt, and avoid repeat freeze-thaw cycles.

TARGET INFORMATION

Gene ID	10587
Gene Symbol	TXNRD2
UniProt ID	TRXR2_HUMAN
Immunogen Region	1-100
Immunogen Sequence	MAAMAVALRGLGGRFRWRWRTQ AVAGGVVARGAARGAAAGQRDY DLLVVGGSGLLACAKEAAQ LGRKVAVVDYVEPSPQGTTRW GLGGTCVNVGCIIPKKLMHQA
Specificity	A synthetic peptide corresponding to a sequence within amino acids 1-100 of human Thioredoxin reductase 2 (TXNRD2) (NP_006431.2).

ADDITIONAL INFORMATION

Note **STRICTLY FOR FURTHER SCIENTIFIC RESEARCH USE ONLY (RUO). MUST NOT TO BE USED IN DIAGNOSTIC OR THERAPEUTIC APPLICATIONS.**



Western blot analysis of various lysates using Thioredoxin reductase 2 (Thioredoxin reductase 2 (TXNRD2)) Rabbit mAb (STJ11102389) at 1:1000 dilution.

Secondary antibody: HRP-conjugated Goat anti-Rabbit IgG (H+L) (STJS000856) at 1:10000 dilution.

Lysates/proteins: 25 Mu g per lane.

Blocking buffer: 3% nonfat dry milk in TBST.

Detection: ECL Basic Kit

Exposure time: 10s.