

**Anti-BUB3 antibody (1-100) [S3MR] (STJ11102383)**
**GENERAL INFORMATION**

Product Type	Primary antibodies
Applications	WB/IHC-P/IF/ICC/ELISA
Host / Source	Rabbit
Reactivity	Human/Mouse/Rat

**PRODUCT PROPERTIES**

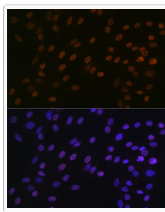
Clonality	Monoclonal
Concentration	Lot specific
Conjugation	Unconjugated
Purification	Affinity purification
Dilution Range	WB:1:500-1:2000 IHC-P:1:50-1:200 IF/CC:1:50-1:200 ELISA:Recommended starting concentration is 1 µg/mL. Please optimize the concentration based on your specific assay requirements.
Formulation	PBS with 0.02% Sodium Azide, 0.05% BSA, 50% Glycerol, pH 7.3.
Isotype	IgG
Molecular Weight	Protein Mw: 37kDa Observed Mw:
Storage Instruction	Store at -20°C for up to 1 year from the date of receipt, and avoid repeat freeze-thaw cycles.

**TARGET INFORMATION**

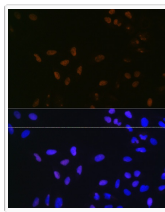
Gene ID	<a href="#">9184</a>
Gene Symbol	<a href="#">BUB3</a>
UniProt ID	<a href="#">BUB3_HUMAN</a>
Immunogen Region	1-100
Immunogen Sequence	MTGSNEFKLNQPPEDGISSV KFSNPNTSQFLLVSSWDTSVR LYDVPANSMRLKYQHTGAVL DCAFYDPTHAWSGGLDHLK MHDLNTDQENLVGTHDAPIR
Specificity	A synthetic peptide corresponding to a sequence within amino acids 1-100 of human BUB3 (O43684).

**ADDITIONAL INFORMATION**

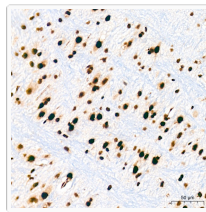
Note	STRICTLY FOR FURTHER SCIENTIFIC RESEARCH USE ONLY (RUO). MUST NOT TO BE USED IN DIAGNOSTIC OR THERAPEUTIC APPLICATIONS.
------	---



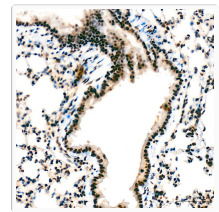
Western blot analysis of various lysates using BUB3 Rabbit mAb (STJ11102383) at 1:1000 dilution.  
Secondary antibody: HRP-conjugated Goat anti-Rabbit IgG (H+L) (STJS000856) at 1:10000 dilution.  
Lysates/proteins: 25 Mu g per lane.  
Blocking buffer: 3% nonfat dry milk in TBST.  
Detection: ECL Basic Kit  
Exposure time: 90s.



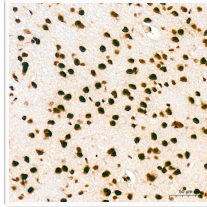
Immunohistochemistry analysis of paraffin-embedded Rat spleen tissue using BUB3 Rabbit mAb (STJ11102383) at a dilution of 1:200 (40x lens). High pressure antigen retrieval was performed with 0.01 M citrate buffer (pH 6.0) prior to immunohistochemistry staining.



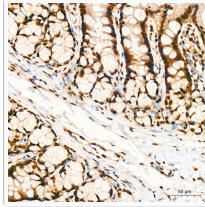
Immunohistochemistry analysis of paraffin-embedded Human colon carcinoma tissue using BUB3 Rabbit mAb (STJ11102383) at a dilution of 1:200 (40x lens). High pressure antigen retrieval was performed with 0.01 M citrate buffer (pH 6.0) prior to immunohistochemistry staining.



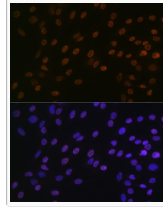
Immunohistochemistry analysis of paraffin-embedded Mouse brain tissue using BUB3 Rabbit mAb (STJ11102383) at a dilution of 1:200 (40x lens). High pressure antigen retrieval was performed with 0.01 M citrate buffer (pH 6.0) prior to immunohistochemistry staining.



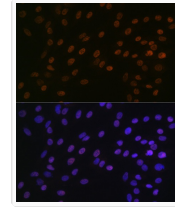
Immunohistochemistry analysis of paraffin-embedded Rat colon tissue using BUB3 Rabbit mAb (STJ11102383) at a dilution of 1:200 (40x lens). High pressure antigen retrieval was performed with 0.01 M citrate buffer (pH 6.0) prior to immunohistochemistry staining.



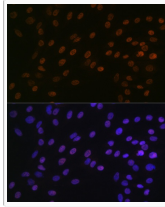
Immunohistochemistry analysis of paraffin-embedded Rat colon tissue using BUB3 Rabbit mAb (STJ11102383) at a dilution of 1:200 (40x lens). High pressure antigen retrieval was performed with 0.01 M citrate buffer (pH 6.0) prior to immunohistochemistry staining.



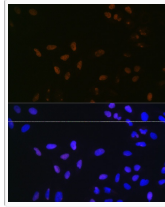
Western blot analysis of various lysates using BUB3 Rabbit mAb (STJ11102383) at 1:1000 dilution.  
Secondary antibody: HRP Goat Anti-Rabbit IgG (H+L) (STJS000856) at 1:10000 dilution.  
Lysates/proteins: 25 Mu g per lane.  
Blocking buffer: 3% nonfat dry milk in TBST.  
Detection: ECL Basic Kit  
Exposure time: 90s.



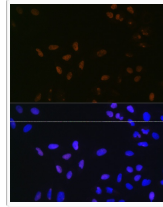
Immunohistochemistry analysis of BUB3 in paraffin-embedded human colon carcinoma tissue using BUB3 Rabbit mAb (STJ11102383) at a dilution of 1:200 (40x lens). High pressure antigen retrieval was performed with 0.01 M citrate buffer (pH 6.0) prior to immunohistochemistry staining.



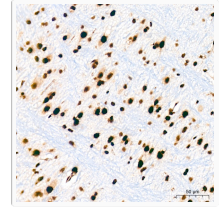
Immunofluorescence analysis of C6 cells using BUB3 Rabbit mAb (STJ11102383) at dilution of 1:100 (40x lens). Secondary antibody: Cy3 Goat Anti-Rabbit IgG (H+L) (STJS001166) at 1:500 dilution. Blue: DAPI for nuclear staining.



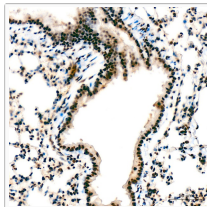
Immunohistochemistry analysis of BUB3 in paraffin-embedded human colon tissue using BUB3 Rabbit mAb (STJ11102383) at a dilution of 1:200 (40x lens). High pressure antigen retrieval was performed with 0.01 M citrate buffer (pH 6.0) prior to immunohistochemistry staining.



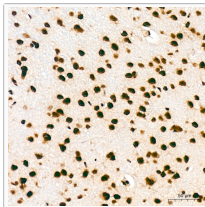
Immunofluorescence analysis of U-2 OS cells using BUB3 Rabbit mAb (STJ11102383) at dilution of 1:100 (40x lens). Secondary antibody: Cy3 Goat Anti-Rabbit IgG (H+L) (STJS001166) at 1:500 dilution. Blue: DAPI for nuclear staining.



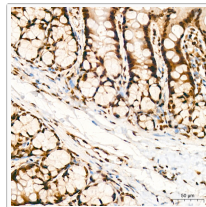
Immunohistochemistry analysis of BUB3 in paraffin-embedded mouse brain tissue using BUB3 Rabbit mAb (STJ11102383) at a dilution of 1:200 (40x lens). High pressure antigen retrieval was performed with 0.01 M citrate buffer (pH 6.0) prior to immunohistochemistry staining.



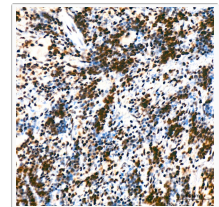
Immunohistochemistry analysis of BUB3 in paraffin-embedded mouse lung tissue using BUB3 Rabbit mAb (STJ11102383) at a dilution of 1:200 (40x lens). High pressure antigen retrieval was performed with 0.01 M citrate buffer (pH 6.0) prior to immunohistochemistry staining.



Immunohistochemistry analysis of BUB3 in paraffin-embedded rat brain tissue using BUB3 Rabbit mAb (STJ11102383) at a dilution of 1:200 (40x lens). High pressure antigen retrieval was performed with 0.01 M citrate buffer (pH 6.0) prior to immunohistochemistry staining.



Immunohistochemistry analysis of BUB3 in paraffin-embedded rat colon tissue using BUB3 Rabbit mAb (STJ11102383) at a dilution of 1:200 (40x lens). High pressure antigen retrieval was performed with 0.01 M citrate buffer (pH 6.0) prior to immunohistochemistry staining.



Immunohistochemistry analysis of BUB3 in paraffin-embedded rat spleen tissue using BUB3 Rabbit mAb (STJ11102383) at a dilution of 1:200 (40x lens). High pressure antigen retrieval was performed with 0.01 M citrate buffer (pH 6.0) prior to immunohistochemistry staining.