

Anti-HLA-A/HLA-B antibody (200-300) [S9MR] (STJ11102369)

GENERAL INFORMATION

Product Type	Primary antibodies
Applications	WB/IF/ICC/ELISA
Host / Source	Rabbit
Reactivity	Human

PRODUCT PROPERTIES

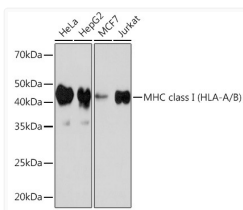
Clonality	Monoclonal
Concentration	Lot specific
Conjugation	Unconjugated
Purification	Affinity purification
Dilution Range	WB:1:1000-1:2000 IF/ICC:1:100-1:400 ELISA:Recommended starting concentration is 1 µg/mL. Please optimize the concentration based on your specific assay requirements.
Formulation	PBS with 0.02% Sodium Azide, 0.05% BSA, 50% Glycerol, pH 7.3.
Isotype	IgG
Molecular Weight	Protein Mw: 41kDa Observed Mw: 44kDa
Storage Instruction	Store at -20°C for up to 1 year from the date of receipt, and avoid repeat freeze-thaw cycles.

TARGET INFORMATION

Gene ID	3106
Gene Symbol	HLA-B
UniProt ID	HLAB_HUMAN
Immunogen Region	200-300
Immunogen Sequence	KETLQRTPPKTHMTHHPIS DHEATLRCWALGFYPAEITL TWQRDGEDQTQDELVETRP AGDGTFFQKWAAVVPSGEEQ RYTCHVQHEGLPKPLTLRWE L
Specificity	A synthetic peptide corresponding to a sequence within amino acids 200-300 of human MHC class I (HLA-A/B) (P04439).

ADDITIONAL INFORMATION

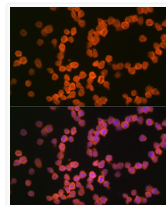
Note STRICTLY FOR FURTHER SCIENTIFIC RESEARCH USE ONLY (RUO). MUST NOT TO BE USED IN DIAGNOSTIC OR THERAPEUTIC APPLICATIONS.



Western blot analysis of various lysates using MHC class I (HLA-A/B) Rabbit mAb (STJ11102369) at 1:1000 dilution.

Secondary antibody: HRP-conjugated Goat anti-Rabbit IgG (H+L) (STJS000856) at 1:10000 dilution.

Lysates/proteins: 25 µg per lane.
Blocking buffer: 3% nonfat dry milk in TBST.
Detection: ECL Basic Kit
Exposure time: 90s.



Immunofluorescence analysis of THP-1 cells using MHC class I (HLA-A/B) Rabbit mAb (STJ11102369) at dilution of 1:100. Blue: DAPI for nuclear staining.