

## Anti-TPM1 antibody (185-284) [S2MR] (STJ11102362)

### GENERAL INFORMATION

Product Type	Primary antibodies
Applications	WB/IHC-P/IF/ICC/IP/ELISA
Host / Source	Rabbit
Reactivity	Mouse/Rat

### PRODUCT PROPERTIES

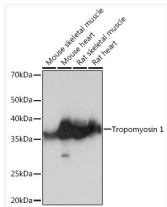
Clonality	Monoclonal
Concentration	Lot specific
Conjugation	Unconjugated
Purification	Affinity purification
Dilution Range	WB:1:500-1:2000 IHC-P:1:50-1:200 IF/ICC:1:50-1:200 IP:0.5 Mu g-4 Mu g antibody for 400 Mu g-600 Mu g extracts of whole cells ELISA:Recommended starting concentration is 1 Mu g/mL. Please optimize the concentration based on your specif
Formulation	PBS with 0.02% Sodium Azide, 0.05% BSA, 50% Glycerol, pH 7.3.
Isotype	IgG
Molecular Weight	Protein Mw: 33kDa Observed Mw: 32, 35, 36, 41kDa
Storage Instruction	Store at -20°C for up to 1 year from the date of receipt, and avoid repeat freeze-thaw cycles.

### TARGET INFORMATION

Gene ID	<a href="#">7168</a>
Gene Symbol	<a href="#">TPM1</a>
UniProt ID	<a href="#">TPM1_HUMAN</a>
Immunogen Region	185-284
Immunogen Sequence	LSEGKCAELEEELKTVTNNL KSLEAQAEKYSQKEDRYEEE IKVLSDKLKEAETRAEFAER SVTKLEKSIDDELYAQK LKYKAISEELDHALNDMTSI
Specificity	A synthetic peptide corresponding to a sequence within amino acids 185-284 of human Tropomyosin 1 (P09493).

### ADDITIONAL INFORMATION

Note STRICTLY FOR FURTHER SCIENTIFIC RESEARCH USE ONLY (RUO). MUST NOT TO BE USED IN DIAGNOSTIC OR THERAPEUTIC APPLICATIONS.



Western blot analysis of various lysates using Tropomyosin 1 Rabbit mAb (STJ11102362) at 1:1000 dilution.

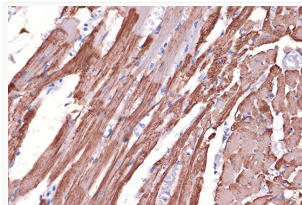
Secondary antibody: HRP-conjugated Goat anti-Rabbit IgG (H+L) (STJS000856) at 1:10000 dilution.

Lysates/proteins: 25 Mu g per lane.

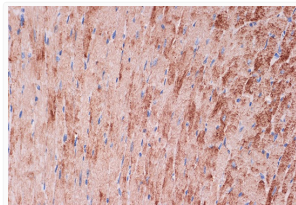
Blocking buffer: 3% nonfat dry milk in TBST.

Detection: ECL Basic Kit

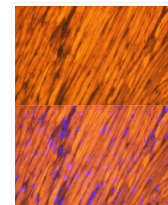
Exposure time: 3s.



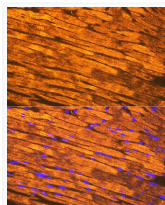
Immunohistochemistry analysis of paraffin-embedded Rat heart using Tropomyosin 1 Rabbit mAb (STJ11102362) at dilution of 1:100 (40x lens). Microwave antigen retrieval performed with 0.01M Tris/EDTA Buffer (pH 9.0) prior to immunohistochemistry staining.



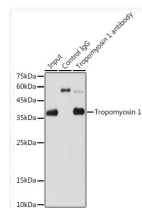
Immunohistochemistry analysis of paraffin-embedded Mouse heart using Tropomyosin 1 Rabbit mAb (STJ11102362) at dilution of 1:100 (40x lens). Microwave antigen retrieval performed with 0.01M Tris/EDTA Buffer (pH 9.0) prior to immunohistochemistry staining.



Immunofluorescence analysis of paraffin-embedded rat heart using Tropomyosin 1 Rabbit mAb (STJ11102362) at dilution of 1:100 (40x lens). Secondary antibody: Cy3-conjugated Goat anti-Rabbit IgG (H+L) (STJS001166) at 1:500 dilution. Blue: DAPI for nuclear staining.



Immunofluorescence analysis of paraffin-embedded mouse heart using Tropomyosin 1 Rabbit mAb (STJ11102362) at dilution of 1:100 (40x lens). Secondary antibody: Cy3-conjugated Goat anti-Rabbit IgG (H+L) (STJS001166) at 1:500 dilution. Blue: DAPI for nuclear staining.



Immunoprecipitation analysis of 600 Mu g extracts of Rat heart using 3 Mu g Tropomyosin 1 Rabbit mAb (STJ11102362). Western blot was performed from the immunoprecipitate using Tropomyosin 1 Rabbit mAb (STJ11102362) at a dilution of 1:1000.