

Anti-EIF2B5 antibody (1-100) [S0MR] (STJ11102350)

GENERAL INFORMATION

Product Type	Primary antibodies
Applications	WB/IHC-P/IF/ICC/ELISA
Host / Source	Rabbit
Reactivity	Human/Mouse/Rat

PRODUCT PROPERTIES

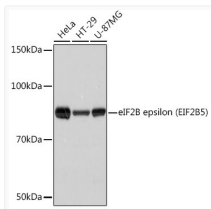
Clonality	Monoclonal
Concentration	Lot specific
Conjugation	Unconjugated
Purification	Affinity purification
Dilution Range	WB:1:500-1:2000 IHC-P:1:50-1:200 IF/ICC:1:50-1:200 ELISA:Recommended starting concentration is 1 µg/mL. Please optimize the concentration based on your specific assay requirements.
Formulation	PBS with 0.02% Sodium Azide, 0.05% BSA, 50% Glycerol, pH 7.3.
Isotype	IgG
Molecular Weight	Protein Mw: 80kDa Observed Mw: 80kDa
Storage Instruction	Store at -20°C for up to 1 year from the date of receipt, and avoid repeat freeze-thaw cycles.

TARGET INFORMATION

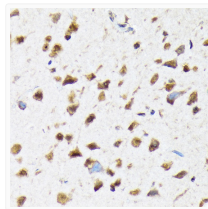
Gene ID	8893
Gene Symbol	EIF2B5
UniProt ID	E12BE_HUMAN
Immunogen Region	1-100
Immunogen Sequence	MAAPVVPAPGVVSRANKRS GAGPGGGGGGGARGAEEEEPP PPLQAVLVADSFDRRFFPIS KDQPRVLLPLANVALIDYTL EFLTATGVQETFVFCCKAA
Specificity	A synthetic peptide corresponding to a sequence within amino acids 1-100 of human eIF2B epsilon (EIF2B5) (E12BE_HUMAN) (Q13144).

ADDITIONAL INFORMATION

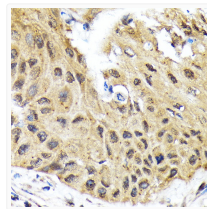
Note **STRICTLY FOR FURTHER SCIENTIFIC RESEARCH USE ONLY (RUO). MUST NOT TO BE USED IN DIAGNOSTIC OR THERAPEUTIC APPLICATIONS.**



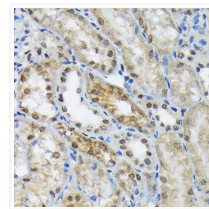
Western blot analysis of various lysates using eIF2B epsilon (EIF2B5) (EIF2B5) Rabbit mAb (STJ11102350) at 1:1000 dilution. Secondary antibody: HRP-conjugated Goat anti-Rabbit IgG (H+L) (STJS000856) at 1:10000 dilution. Lysates/proteins: 25 µg per lane. Blocking buffer: 3% nonfat dry milk in TBST. Detection: ECL Basic Kit. Exposure time: 3s.



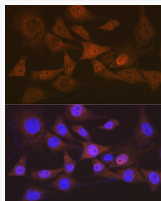
Immunohistochemistry analysis of paraffin-embedded Human tonsil tissue using eIF2B epsilon (EIF2B5) Rabbit mAb (STJ11102350) at a dilution of 1:200 (40x lens). High pressure antigen retrieval was performed with 0.01 M citrate buffer (pH 6.0) prior to immunohistochemistry staining.



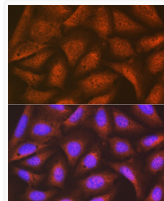
Immunohistochemistry analysis of paraffin-embedded Human breast tissue using eIF2B epsilon (EIF2B5) Rabbit mAb (STJ11102350) at a dilution of 1:200 (40x lens). High pressure antigen retrieval was performed with 0.01 M citrate buffer (pH 6.0) prior to immunohistochemistry staining.



Immunohistochemistry analysis of paraffin-embedded Human colon tissue using eIF2B epsilon (EIF2B5) Rabbit mAb (STJ11102350) at a dilution of 1:200 (40x lens). High pressure antigen retrieval was performed with 0.01 M citrate buffer (pH 6.0) prior to immunohistochemistry staining.



Immunohistochemistry analysis of paraffin-embedded Human breast cancer tissue using eIF2B epsilon (EIF2B5) Rabbit mAb (STJ11102350) at a dilution of 1:200 (40x lens). High pressure antigen retrieval was performed with 0.01 M citrate buffer (pH 6.0) prior to immunohistochemistry staining.



Confocal imaging of MCF7 cells using eIF2B epsilon (EIF2B5) Rabbit mAb (STJ11102350), dilution 1:100 followed by a further incubation with Cy3 Goat Anti-Rabbit IgG (H+L) (STJS001166, dilution 1:500) (Red). The cells were counterstained with Alpha-Tubulin Mouse mAb (STJ11107556, dilution 1:400) followed by incubation with ABfluo® 488-conjugated Goat Anti-Mouse IgG (H+L) antibody (STJS001209, dilution 1:500) (Green). DAPI was used for nuclear staining (Blue). Objective: 100x.