

## Anti-SOX10 antibody (350-450) [S5MR] (STJ11102345)

### GENERAL INFORMATION

Product Type	Primary antibodies
Applications	WB/IF/ICC/ELISA
Host / Source	Rabbit
Reactivity	Human/Mouse/Rat

### PRODUCT PROPERTIES

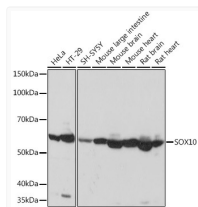
Clonality	Monoclonal
Concentration	Lot specific
Conjugation	Unconjugated
Purification	Affinity purification
Dilution Range	WB:1:1000-1:6000 IF/CC:1:100-1:400 ELISA:Recommended starting concentration is 1 Mu g/mL. Please optimize the concentration based on your specific assay requirements.
Formulation	PBS with 0.02% Sodium Azide, 0.05% BSA, 50% Glycerol, pH 7.3.
Isotype	IgG
Molecular Weight	Protein Mw: 50kDa Observed Mw: 62kDa
Storage Instruction	Store at -20°C for up to 1 year from the date of receipt, and avoid repeat freeze-thaw cycles.

### TARGET INFORMATION

Gene ID	<a href="#">6663</a>
Gene Symbol	<a href="#">SOX10</a>
UniProt ID	<a href="#">SOX10_HUMAN</a>
Immunogen Region	350-450
Immunogen Sequence	VDAKAQVKTETAGPQGPPHY TDQPSTSQIAYTSLSLPHYG SAFPSISRPFQFDYSDHQPSG PYYGHSGQASGLYSAFSYMGM PSQRPLYTAISDPSPSGPQS H
Specificity	A synthetic peptide corresponding to a sequence within amino acids 350-450 of human SOX10 (P56693).

### ADDITIONAL INFORMATION

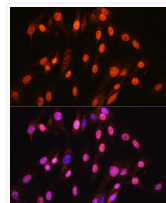
Note STRICTLY FOR FURTHER SCIENTIFIC RESEARCH USE ONLY (RUO). MUST NOT TO BE USED IN DIAGNOSTIC OR THERAPEUTIC APPLICATIONS.



Western blot analysis of various lysates using SOX10 Rabbit mAb (STJ11102345) at 1:1000 dilution.

Secondary antibody: HRP-conjugated Goat anti-Rabbit IgG (H+L) (STJS000856) at 1:10000 dilution.

Lysates/proteins: 25 Mu g per lane.  
Blocking buffer: 3% nonfat dry milk in TBST.  
Detection: ECL Basic Kit  
Exposure time: 5s.



Immunofluorescence analysis of C6 cells using SOX10 Rabbit mAb (STJ11102345) at dilution of 1:100 (40x lens). Secondary antibody: Cy3-conjugated Goat anti-Rabbit IgG (H+L) (STJS001166) at 1:500 dilution. Blue: DAPI for nuclear staining.