

## Anti-KARS antibody (500-597) [S4MR] (STJ11102344)

### GENERAL INFORMATION

Product Type	Primary antibodies
Applications	WB/IHC-P/IF/ICC/IP/ELISA
Host / Source	Rabbit
Reactivity	Human/Mouse/Rat

### PRODUCT PROPERTIES

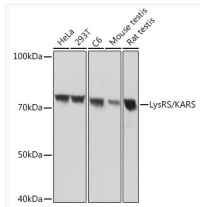
Clonality	Monoclonal
Concentration	Lot specific
Conjugation	Unconjugated
Purification	Affinity purification
Dilution Range	WB:1:500-1:2000 IHC-P:1:50-1:200 IF/CC:1:50-1:200 IP:0.5 Mu g-4 Mu g antibody for 200 Mu g-400 Mu g extracts of whole cells ELISA:Recommended starting concentration is 1 Mu g/mL. Please optimize the concentration based on your specif
Formulation	PBS with 0.02% Sodium Azide, 0.05% BSA, 50% Glycerol, pH 7.3.
Isotype	IgG
Molecular Weight	Protein Mw: 68kDa Observed Mw: 75kDa
Storage Instruction	Store at -20°C for up to 1 year from the date of receipt, and avoid repeat freeze-thaw cycles.

### TARGET INFORMATION

Gene ID	<a href="#">3735</a>
Gene Symbol	<a href="#">KARS1</a>
UniProt ID	<a href="#">SYK_HUMAN</a>
Immunogen Region	500-597
Immunogen Sequence	TELNDPMRQRQLFEEQAKAK AAGDDEAMFIDENFCTALEY GLPPTAGWGMGIDRVAMFLT DSNNIKEVLLFPAMKPEDKK ENVATTDLTLESTTVGTSV
Specificity	Recombinant fusion protein containing a sequence corresponding to amino acids 500-597 of human LysRS/KARS (Q15046).

### ADDITIONAL INFORMATION

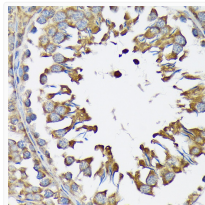
Note STRICTLY FOR FURTHER SCIENTIFIC RESEARCH USE ONLY (RUO). MUST NOT TO BE USED IN DIAGNOSTIC OR THERAPEUTIC APPLICATIONS.



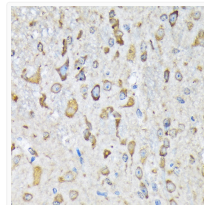
Western blot analysis of various lysates using LysRS/KARS Rabbit mAb (STJ11102344) at 1:1000 dilution.

Secondary antibody: HRP-conjugated Goat anti-Rabbit IgG (H+L) (STJS000856) at 1:10000 dilution.

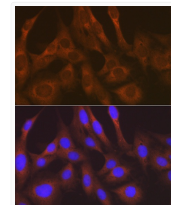
Lysates/proteins: 25 Mu g per lane.  
Blocking buffer: 3% nonfat dry milk in TBST.  
Detection: ECL Basic Kit  
Exposure time: 1s.



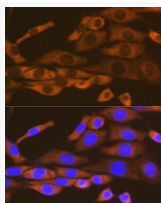
Immunohistochemistry analysis of paraffin-embedded Rat testis using LysRS/KARS Rabbit mAb (STJ11102344) at dilution of 1:100 (40x lens). Microwave antigen retrieval performed with 0.01M Tris/EDTA Buffer (pH 9.0) prior to immunohistochemistry staining.



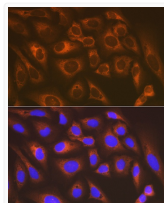
Immunohistochemistry analysis of paraffin-embedded Mouse spinal cord using LysRS/KARS Rabbit mAb (STJ11102344) at dilution of 1:100 (40x lens). Microwave antigen retrieval performed with 0.01M Tris/EDTA Buffer (pH 9.0) prior to immunohistochemistry staining.



Immunofluorescence analysis of C6 cells using LysRS/KARS Rabbit mAb (STJ11102344) at dilution of 1:100 (40x lens). Secondary antibody: Cy3-conjugated Goat anti-Rabbit IgG (H+L) (STJS001166) at 1:500 dilution. Blue: DAPI for nuclear staining.



Immunofluorescence analysis of NIH-3T3 cells using LysRS/KARS Rabbit mAb (STJ11102344) at dilution of 1:100 (40x lens). Secondary antibody: Cy3-conjugated Goat anti-Rabbit IgG (H+L) (STJS001166) at 1:500 dilution. Blue: DAPI for nuclear staining.



Immunofluorescence analysis of U-2 OS cells using LysRS/KARS Rabbit mAb (STJ11102344) at dilution of 1:100 (40x lens). Secondary antibody: Cy3-conjugated Goat anti-Rabbit IgG (H+L) (STJS001166) at 1:500 dilution. Blue: DAPI for nuclear staining.