

Anti-SEC23A antibody (300-400) [S2MR] (STJ11102342)

GENERAL INFORMATION

| | |
|---------------|--------------------|
| Product Type | Primary antibodies |
| Applications | WB/IF/ICC/ELISA |
| Host / Source | Rabbit |
| Reactivity | Human/Mouse/Rat |

PRODUCT PROPERTIES

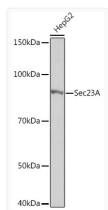
| | |
|---------------------|--|
| Clonality | Monoclonal |
| Concentration | Lot specific |
| Conjugation | Unconjugated |
| Purification | Affinity purification |
| Dilution Range | WB:1:500-1:1000 IF/CC:1:50-1:200 ELISA:Recommended starting concentration is 1 µg/mL. Please optimize the concentration based on your specific assay requirements. |
| Formulation | PBS with 0.02% Sodium Azide, 0.05% BSA, 50% Glycerol, pH 7.3. |
| Isotype | IgG |
| Molecular Weight | Protein Mw: 86kDa Observed Mw: 85kDa |
| Storage Instruction | Store at -20°C for up to 1 year from the date of receipt, and avoid repeat freeze-thaw cycles. |

TARGET INFORMATION

| | |
|--------------------|--|
| Gene ID | 10484 |
| Gene Symbol | SEC23A |
| UniProt ID | SC23A_HUMAN |
| Immunogen Region | 300-400 |
| Immunogen Sequence | MVVGDELKTPIRSWHDIDKD NAKYVKKGKHFALANRAA TTGHVIDIYACALDQTGLLE MKCCPNLTGGYVMGDSFNT SLFKQTFQRVFTKDMHGQFK M |
| Specificity | Recombinant fusion protein containing a sequence corresponding to amino acids 300-400 of human Sec23AA (Q15436). |

ADDITIONAL INFORMATION

Note **STRICTLY FOR FURTHER SCIENTIFIC RESEARCH USE ONLY (RUO). MUST NOT TO BE USED IN DIAGNOSTIC OR THERAPEUTIC APPLICATIONS.**



Western blot analysis of lysates from Hep G2 cells, using Sec23AA Rabbit mAb (STJ11102342) at 1:1000 dilution.

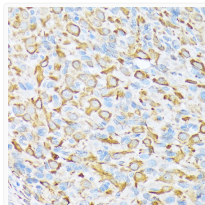
Secondary antibody: HRP-conjugated Goat anti-Rabbit IgG (H+L) (STJS000856) at 1:10000 dilution.

Lysates/proteins: 25 µg per lane.

Blocking buffer: 3% nonfat dry milk in TBST.

Detection: ECL Basic Kit

Exposure time: 1s.



Immunofluorescence analysis of NIH/3T3 cells using Sec23AA Rabbit mAb (STJ11102342) at dilution of 1:100 (40x lens). Secondary antibody: Cy3-conjugated Goat anti-Rabbit IgG (H+L) (STJS001166) at 1:500 dilution. Blue: DAPI for nuclear staining.