

## Anti-HSPA2 antibody (488-637) [S1MR] (STJ11102321)

### GENERAL INFORMATION

Product Type	Primary antibodies
Applications	WB/IF/ICC/ELISA
Host / Source	Rabbit
Reactivity	Human/Mouse/Rat

### PRODUCT PROPERTIES

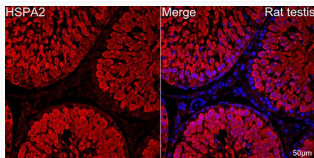
Clonality	Monoclonal
Concentration	Lot specific
Conjugation	Unconjugated
Purification	Affinity purification
Dilution Range	WB:1:500-1:2000 IF/CC:1:50-1:200 ELISA:Recommended starting concentration is 1 Mu g/mL. Please optimize the concentration based on your specific assay requirements.
Formulation	PBS with 0.02% Sodium Azide, 0.05% BSA, 50% Glycerol, pH 7.3.
Isotype	IgG
Molecular Weight	Protein Mw: 70kDa Observed Mw: 70kDa
Storage Instruction	Store at -20°C for up to 1 year from the date of receipt, and avoid repeat freeze-thaw cycles.

### TARGET INFORMATION

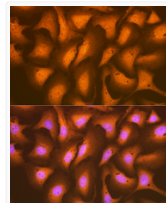
Gene ID	<a href="#">3306</a>
Gene Symbol	<a href="#">HSPA2</a>
UniProt ID	<a href="#">HSP72_HUMAN</a>
Immunogen Region	488-637
Immunogen Sequence	ILNVTAADKSTGKKNKTTIT NDKGRLSKDDIDRMVQEAER YKSEDEANRDRVAAKNALES YTYNIKQTVEDEKLRGKISE QDKNKILDKQCQEVINWLDNRN QMAEKDEYEHKQKELERVNCN PIISKLYQGGPGGGGGGGGS GASGGPTIEE
Specificity	Recombinant fusion protein containing a sequence corresponding to amino acids 488-637 of human HSPA2 (P54652).

### ADDITIONAL INFORMATION

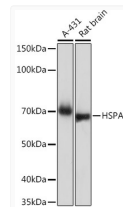
Note **STRICTLY FOR FURTHER SCIENTIFIC RESEARCH USE ONLY (RUO). MUST NOT TO BE USED IN DIAGNOSTIC OR THERAPEUTIC APPLICATIONS.**



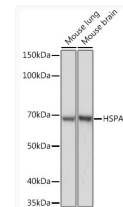
Confocal imaging of paraffin-embedded Rat testis tissue using HSPA2 Rabbit monoclonal antibody (STJ11102321, dilution 1:100) followed by a further incubation with Cy3 Goat Anti-Rabbit IgG (H+L) ( dilution 1:500) (Red). DAPI was used for nuclear staining (Blue). Objective: 40x. Perform high pressure antigen retrieval with 0.01 M citrate buffer (pH 6.0) prior to IF staining.



Immunofluorescence analysis of U-2 OS cells using HSPA2 Rabbit monoclonal antibody (STJ11102321) at dilution of 1:100 (40x lens). Secondary antibody: Cy3 Goat Anti-Rabbit IgG (H+L) at 1:500 dilution. Blue: DAPI for nuclear staining.



Western blot analysis of various lysates using HSPA2 Rabbit monoclonal antibody (STJ11102321) at 1:1000 dilution. Secondary antibody: HRP Goat Anti-Rabbit IgG (H+L) (STJS00856) at 1:10000 dilution. Lysates/proteins: 25 Mu g per lane. Blocking buffer: 3% nonfat dry milk in TBST. Detection: ECL Basic Kit. Exposure time: 30s.



Western blot analysis of various lysates using HSPA2 Rabbit monoclonal antibody (STJ11102321) at 1:1000 dilution. Secondary antibody: HRP Goat Anti-Rabbit IgG (H+L) (STJS00856) at 1:10000 dilution. Lysates/proteins: 25 Mu g per lane. Blocking buffer: 3% nonfat dry milk in TBST. Detection: ECL Basic Kit. Exposure time: 1s.