

## Anti-CHD3 antibody (1-100) [S6MR] (STJ11102316)

### GENERAL INFORMATION

Product Type	Primary antibodies
Applications	WB/IHC-P/IF/ICC/ELISA
Host / Source	Rabbit
Reactivity	Human/Mouse/Rat

### PRODUCT PROPERTIES

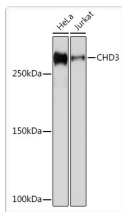
Clonality	Monoclonal
Concentration	Lot specific
Conjugation	Unconjugated
Purification	Affinity purification
Dilution Range	WB:1:500-1:1000 IHC-P:1:50-1:200 IF/CC:1:50-1:200 ELISA:Recommended starting concentration is 1 µg/mL. Please optimize the concentration based on your specific assay requirements.
Formulation	PBS with 0.02% Sodium Azide, 0.05% BSA, 50% Glycerol, pH 7.3.
Isotype	IgG
Molecular Weight	Protein Mw: 227kDa Observed Mw: 260kDa
Storage Instruction	Store at -20°C for up to 1 year from the date of receipt, and avoid repeat freeze-thaw cycles.

### TARGET INFORMATION

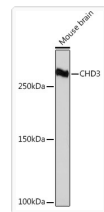
Gene ID	<a href="#">1107</a>
Gene Symbol	<a href="#">CHD3</a>
UniProt ID	<a href="#">CHD3_HUMAN</a>
Immunogen Region	1-100
Immunogen Sequence	MKAADTVILWARKNDQLRI SFPPGLCWGDRMPDKDDIRL LPSALGVKKRKRGPCKQKEN KPGKPRKRRKRDSEEEFGSE RDEYREKSESSEGGSEYGTGPG
Specificity	A synthetic peptide corresponding to a sequence within amino acids 1-100 of human CHD3 (Q12873).

### ADDITIONAL INFORMATION

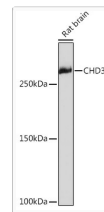
Note	STRICTLY FOR FURTHER SCIENTIFIC RESEARCH USE ONLY (RUO). MUST NOT TO BE USED IN DIAGNOSTIC OR THERAPEUTIC APPLICATIONS.
------	---



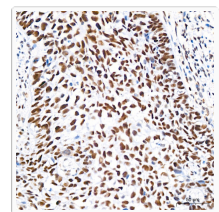
Western blot analysis of extracts of various cell lines, using CHD3 rabbit monoclonal antibody (STJ11102316) at 1:1000 dilution. Secondary antibody: HRP Goat Anti-rabbit IgG (H+L) (STJS000856) at 1:10000 dilution. Lysates/proteins: 25 Mu g per lane. Blocking buffer: 3% non-fat dry milk in TBST. Detection: ECL Basic Kit. Exposure time: 1s.



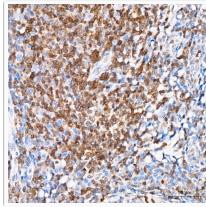
Western blot analysis of extracts of mouse brain, using CHD3 rabbit monoclonal antibody (STJ11102316) at 1:1000 dilution. Secondary antibody: HRP Goat Anti-rabbit IgG (H+L) (STJS000856) at 1:10000 dilution. Lysates/proteins: 25 Mu g per lane. Blocking buffer: 3% non-fat dry milk in TBST. Detection: ECL Basic Kit. Exposure time: 3min.



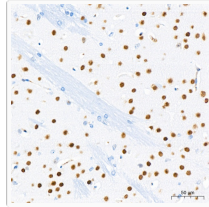
Western blot analysis of extracts of Rat brain, using CHD3 rabbit monoclonal antibody (STJ11102316) at 1:1000 dilution. Secondary antibody: HRP Goat Anti-rabbit IgG (H+L) (STJS000856) at 1:10000 dilution. Lysates/proteins: 25 Mu g per lane. Blocking buffer: 3% non-fat dry milk in TBST. Detection: ECL Enhanced Kit. Exposure time: 3min.



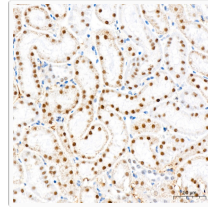
Immunohistochemistry analysis of CHD3 in paraffin-embedded human cervix cancer tissue using CHD3 rabbit monoclonal antibody (STJ11102316) at a dilution of 1:200 (40x lens). High pressure antigen retrieval was performed with 0.01 M citrate buffer (pH 6.0) prior to immunohistochemistry staining.



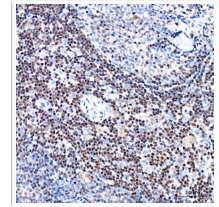
Immunohistochemistry analysis of CHD3 in paraffin-embedded human tonsil tissue using CHD3 rabbit monoclonal antibody (STJ11102316) at a dilution of 1:200 (40x lens). High pressure antigen retrieval was performed with 0.01 M citrate buffer (pH 6.0) prior to immunohistochemistry staining.



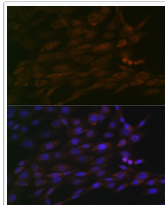
Immunohistochemistry analysis of CHD3 in paraffin-embedded mouse brain tissue using CHD3 rabbit monoclonal antibody (STJ11102316) at a dilution of 1:200 (40x lens). High pressure antigen retrieval was performed with 0.01 M citrate buffer (pH 6.0) prior to immunohistochemistry staining.



Immunohistochemistry analysis of CHD3 in paraffin-embedded mouse kidney tissue using CHD3 rabbit monoclonal antibody (STJ11102316) at a dilution of 1:200 (40x lens). High pressure antigen retrieval was performed with 0.01 M citrate buffer (pH 6.0) prior to immunohistochemistry staining.



Immunohistochemistry analysis of CHD3 in paraffin-embedded rat spleen tissue using CHD3 rabbit monoclonal antibody (STJ11102316) at a dilution of 1:200 (40x lens). High pressure antigen retrieval was performed with 0.01 M citrate buffer (pH 6.0) prior to immunohistochemistry staining.



Immunofluorescence analysis of NIH/3T3 cells using CHD3 rabbit monoclonal antibody (STJ11102316) at dilution of 1:100 (40x lens). Blue: DAPI for nuclear staining.