

Anti-JUND antibody (100-200) [S7MR] (STJ11102307)

GENERAL INFORMATION

Product Type	Primary antibodies
Applications	WB/IP/ELISA/ChIP/CUT&Tag
Host / Source	Rabbit
Reactivity	Human/Mouse/Rat

PRODUCT PROPERTIES

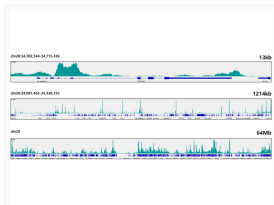
Clonality	Monoclonal
Concentration	Lot specific
Conjugation	Unconjugated
Purification	Affinity purification
Dilution Range	WB:1:1000-1:6000 IP:0.5 Mu g-4 Mu g antibody for 200 Mu g-400 Mu g extracts of whole cells ELISA:Recommended starting concentration is 1 Mu g/mL. Please optimize the concentration based on your specific assay requirements. ChIP:5 Mu g ant
Formulation	PBS with 0.02% Sodium Azide, 0.05% BSA, 50% Glycerol, pH 7.3.
Isotype	IgG
Molecular Weight	Protein Mw: 35kDa Observed Mw: 38kDa/42kDa
Storage Instruction	Store at -20°C for up to 1 year from the date of receipt, and avoid repeat freeze-thaw cycles.

TARGET INFORMATION

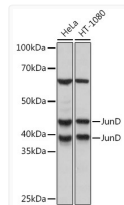
Gene ID	3727
Gene Symbol	JUND
UniProt ID	JUND_HUMAN
Immunogen Region	100-200
Immunogen Sequence	SPELERLIQSNGLVTTTPT SSGFLYPKVAASEEQEFAEG FVKALEDLHKQNQLGAGAAA AAAAAAAGGPGSPTATGSAPP GELAPAAAAPEAPVYANLSS Y
Specificity	A synthetic peptide corresponding to a sequence within amino acids 100-200 of human JunD (P17535).

ADDITIONAL INFORMATION

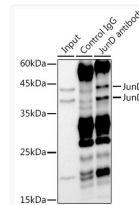
Note **STRICTLY FOR FURTHER SCIENTIFIC RESEARCH USE ONLY (RUO). MUST NOT TO BE USED IN DIAGNOSTIC OR THERAPEUTIC APPLICATIONS.**



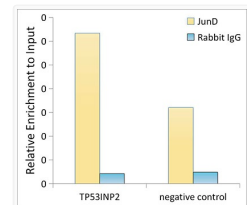
CUT&Tag was performed using the CUT&Tag Assay Kit (pAG-Tn5) for Illumina (RK20265) from 10⁸ Hep G2 cells with 1 Mu g JunD rabbit monoclonal antibody (STJ11102307), along with a Goat Anti-rabbit IgG (H+L). The CUT&Tag results indicate the enrichment pattern of JunD in representative gene loci (TP53INP2), as shown in figure.



Western blot analysis of extracts of various cell lines, using JunD rabbit monoclonal antibody (STJ11102307) at 1:1000 dilution. Secondary antibody: HRP Goat Anti-rabbit IgG (H+L) (STJS000856) at 1:10000 dilution. Lysates/proteins: 25 Mu g per lane. Blocking buffer: 3% non-fat dry milk in TBST. Detection: ECL Basic Kit. Exposure time: 3s.



Immunoprecipitation analysis of 300 Mu g extracts of HeLa cells using 3 Mu g JunD antibody (STJ11102307). Western blot was performed from the immunoprecipitate using JunD antibody (STJ11102307) at a dilution of 1:1000.



Chromatin immunoprecipitation analysis of extracts of HepG2 cells, using JunD antibody (STJ11102307) and rabbit IgG. The amount of immunoprecipitated DNA was checked by quantitative PCR. Histogram was constructed by the ratios of the immunoprecipitated DNA to the input.